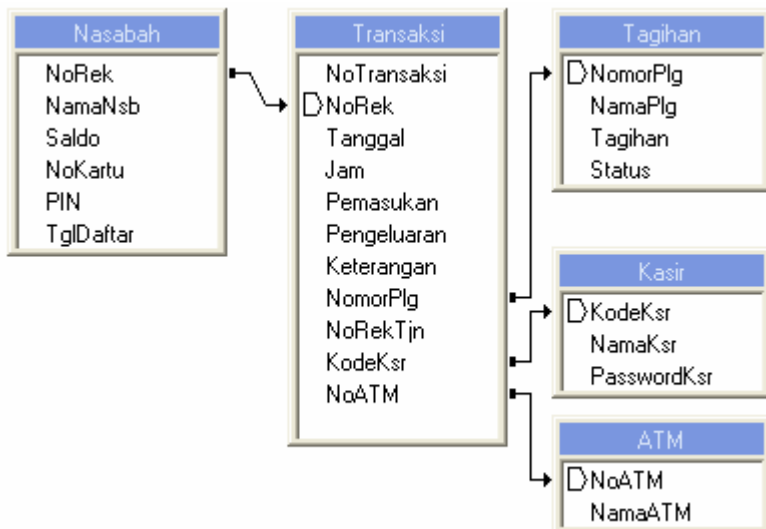


*Harga program Rp.50.000.* Peminat silakan transfer ke 066-0525-947 (BCA) atau 156-000-250-214 (Mandiri) atau 0139-0106-3038-504 (BRI) an. Uus Rasmawan  
Email : [uusrusmawan@yahoo.com](mailto:uusrusmawan@yahoo.com)

# PROGRAM BANK (TABUNGAN NASABAH) FULL SOURCE CODE

## Normalisasi File



## Buka Rekening

The screenshot shows the 'Buka Rekening' application window. It contains several input fields and buttons:

- Transaction details: No Transaksi, Tanggal, Jam, Kode Kasir, Nama Kasir.
- Account details: No Rekening, Nama Nasabah, No Kartu, PIN, Saldo.
- Buttons: Input, Edit, Hapus, Tutup.
- A 'Combo1' dropdown menu is located next to the 'No Rekening' field.

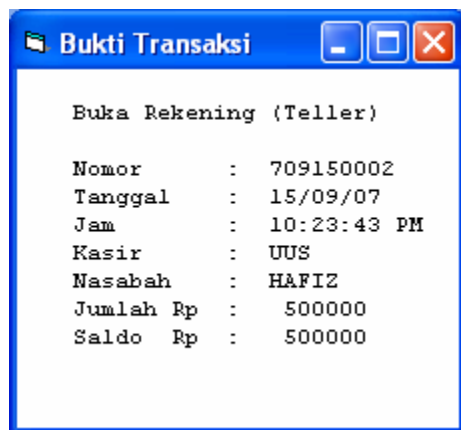
```
Private Sub Combo1_KeyPress(Keyascii As Integer)
If Keyascii = 13 Then
    If CmdEdit.Caption = "&Simpan" Then
        Call CariData
        If Not RSNasabah.EOF Then
            TampilkanData
            TxtNoRek.Enabled = False
            TxtNama.SetFocus
        Else
            MsgBox "Nomor Rekening Nasabah Tidak Ada"
            TxtNoRek.SetFocus
            Exit Sub
        End If
    End If
End If

If CmdHapus.Caption = "&Delete" Then
    Call CariData
    If Not RSNasabah.EOF Then
```

**Harga program Rp.50.000.** Peminat silakan transfer ke 066-0525-947 (BCA) atau 156-000-250-214 (Mandiri) atau 0139-0106-3038-504 (BRI) an. Uus Rasmawan  
Email : [uusrusmawan@yahoo.com](mailto:uusrusmawan@yahoo.com)

```
TampilkanData
Pesan = MsgBox("Yakin akan dihapus", vbYesNo)
If Pesan = vbYes Then
    Dim HapusNasabah As String
    HapusNasabah = "Delete From Nasabah where NoRek= '" & TxtNoRek & "'"
    Conn.Execute HapusNasabah
    KondisiAwal
    Menu.DT.Refresh
Else
    KondisiAwal
End If
Else
    MsgBox "Data Tidak ditemukan"
    TxtNoRek.SetFocus
End If
End If
End Sub

Sub CetakLayar()
Tampilkan.Show
Tampilkan.Font = "Courier New"
Call BukaDB
RSTransaksi.Open "select * from Transaksi Where NoTransaksi In(Select Max(NoTransaksi)From
Transaksi)Order By NoTransaksi Desc", Conn
RSNasabah.Open "select * from Nasabah where NoRek='" & RSTransaksi!norek & "'", Conn
RSKasir.Open "select * from Kasir where KodeKsr='" & RSTransaksi!KodeKsr & "'", Conn
Tampilkan.Print
Tampilkan.Print
Tampilkan.Print Tab(5); "Buka Rekening (Teller)"
Tampilkan.Print
Tampilkan.Print Tab(5); "Nomor      : "; RSTransaksi!NoTransaksi
Tampilkan.Print Tab(5); "Tanggal   : "; RSTransaksi!Tanggal
Tampilkan.Print Tab(5); "Jam       : "; RSTransaksi!Jam
Tampilkan.Print Tab(5); "Kasir     : "; RSKasir!NamaKsr
Tampilkan.Print Tab(5); "Nasabah   : "; RSNasabah!Namansb
Tampilkan.Print Tab(5); "Jumlah Rp : "; RSTransaksi!Pemasukan
Tampilkan.Print Tab(5); "Saldo Rp  : "; RSNasabah!Saldo
End Sub
```



*Harga program Rp.50.000.* Peminat silakan transfer ke 066-0525-947 (BCA) atau 156-000-250-214 (Mandiri) atau 0139-0106-3038-504 (BRI) an. Uus Rasmawan  
Email : [uusrusmawan@yahoo.com](mailto:uusrusmawan@yahoo.com)

## Transaksi Setoran

The screenshot shows a Windows-style application window titled "Setoran Kas". It contains the following elements:

- Fields for "No Transaksi", "Tanggal", "Jam", "Kode Kasir", and "Nama Kasir".
- A "Combo1" dropdown menu next to the "No Rekening" field.
- Fields for "Nasabah", "Saldo", and "Setoran".
- Buttons for "Input" and "Tutup" at the bottom.

```
Private Sub TxtNoRek_KeyPress(Keyascii As Integer)
On Error Resume Next
If Keyascii = 27 Then
    Semula
    CmdTutup.SetFocus
End If
If Keyascii = 13 Then
    If CmdInput.Caption = "&Simpan" Then
        Call CariNasabah
        If Not RSNasabah.EOF Then
            LblNama = RSNasabah!Namansb
            LblSaldo = RSNasabah!Saldo
            LblSaldo = Format(RSNasabah!Saldo, "###,###,###")
            TxtJumlahStr.SetFocus
        Else
            X = MsgBox("Rekening No : < " & TxtNoRek & " > tidak ada, coba nomor lain...!",
"Informasi")
            TxtNoRek.SetFocus
        End If
    End If
End If
If Not (Keyascii >= Asc("0") And Keyascii <= Asc("9") Or Keyascii = vbKeyBack) Then Keyascii = 0
End Sub
```

```
Sub CetakLayar()
Tampilkan.Show
Tampilkan.Font = "Courier New"
Call BukaDB
RSTransaksi.Open "select * from Transaksi Where NoTransaksi In(Select Max(NoTransaksi)From
Transaksi)Order By NoTransaksi Desc", Conn
RSNasabah.Open "select * from Nasabah where NoRek='" & RSTransaksi!norek & "'", Conn
RSKasir.Open "select * from Kasir where KodeKsr='" & RSTransaksi!KodeKsr & "'", Conn
Tampilkan.Print
Tampilkan.Print
Tampilkan.Print Tab(5); "Bukti Setoran (Teller)"
Tampilkan.Print
Tampilkan.Print Tab(5); "Nomor      : "; RSTransaksi!NoTransaksi
Tampilkan.Print Tab(5); "Tanggal   : "; RSTransaksi!Tanggal
Tampilkan.Print Tab(5); "Jam       : "; RSTransaksi!Jam
Tampilkan.Print Tab(5); "Kasir     : "; RSKasir!NamaKsr
Tampilkan.Print Tab(5); "Nasabah   : "; RSNasabah!Namansb
Tampilkan.Print Tab(5); "Jumlah    : "; RSTransaksi!Pemasukan, "###,###,###")
Tampilkan.Print Tab(5); "Saldo     : "; RSNasabah!Saldo, "###,###,###")
End Sub
```

*Harga program Rp.50.000.* Peminat silakan transfer ke 066-0525-947 (BCA) atau 156-000-250-214 (Mandiri) atau 0139-0106-3038-504 (BRI) an. Uus Rasmawan  
Email : [uusrusmawan@yahoo.com](mailto:uusrusmawan@yahoo.com)



## Pengambilan Kas



```
Private Sub TxtNoRek_KeyPress(Keyascii As Integer)
On Error Resume Next
If Keyascii = 27 Then
    Semula
    CmdTutup.SetFocus
End If
If Keyascii = 13 Then
    If CmdInput.Caption = "&Simpan" Then
        Call CariNasabah
        If Not RSNasabah.EOF Then
            LblNama = RSNasabah!Namansb
            LblSaldo = RSNasabah!Saldo
            LblSaldo = Format(RSNasabah!Saldo, "###,###,###")
            TxtJumlahAbl.SetFocus
        Else
            X = MsgBox("Rekening No : < " & TxtNoRek & " > tidak ada, coba nomor lain...!",
"Informasi")
            TxtNoRek.SetFocus
        End If
    End If
End If
If Not (Keyascii >= Asc("0") And Keyascii <= Asc("9") Or Keyascii = vbKeyBack) Then Keyascii = 0
End Sub

Private Sub TxtJumlahAbl_KeyPress(Keyascii As Integer)
If Keyascii = 27 Then
    Semula
    CmdTutup.SetFocus
End If
If Keyascii = 13 Then
    If Val(TxtJumlahAbl) > RSNasabah!Saldo Then
        MsgBox "Dana tidak cukup" & Chr(13) & _
```

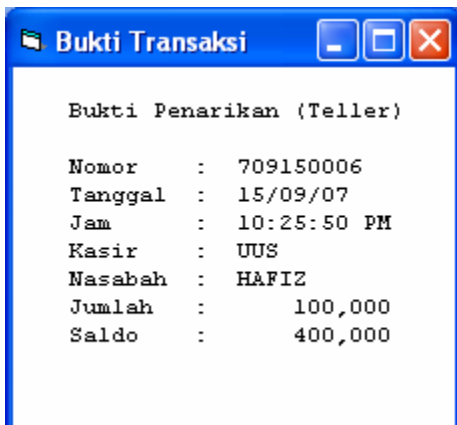
**Harga program Rp.50.000.** Peminat silakan transfer ke 066-0525-947 (BCA) atau 156-000-250-214 (Mandiri) atau 0139-0106-3038-504 (BRI) an. Uus Rusmawan  
Email : [uusrusmawan@yahoo.com](mailto:uusrusmawan@yahoo.com)

```

    "Saldo hanya Rp. " & Format(RSNasabah!Saldo, "###,###,###") & "
    TxtJumlahAbl = ""
    TxtJumlahAbl.SetFocus
    Exit Sub
End If

If CmdInput.Caption = "&Simpan" Then
    CmdInput.SetFocus
End If
End If
If Not (Keyascii >= Asc("0") And Keyascii <= Asc("9") Or Keyascii = vbKeyBack) Then Keyascii = 0
End Sub

Sub CetakLayar()
Tampilkan.Show
Tampilkan.Font = "Courier New"
Call BukaDB
RSTransaksi.Open "select * from Transaksi Where NoTransaksi In(Select Max(NoTransaksi)From
Transaksi)Order By NoTransaksi Desc", Conn
RSNasabah.Open "select * from Nasabah where NoRek='" & RSTransaksi!norek & "'", Conn
RSKasir.Open "select * from Kasir where KodeKsr='" & RSTransaksi!KodeKsr & "'", Conn
Tampilkan.Print
Tampilkan.Print
Tampilkan.Print Tab(5); "Bukti Penarikan (Teller)"
Tampilkan.Print
Tampilkan.Print Tab(5); "Nomor      : "; RSTransaksi!NoTransaksi
Tampilkan.Print Tab(5); "Tanggal   : "; RSTransaksi!Tanggal
Tampilkan.Print Tab(5); "Jam       : "; RSTransaksi!Jam
Tampilkan.Print Tab(5); "Kasir     : "; RSKasir!NamaKsr
Tampilkan.Print Tab(5); "Nasabah  : "; RSNasabah!Namansb
Tampilkan.Print Tab(5); "Jumlah    : "; RKanan(RSTransaksi!Pengeluaran, "###,###,###")
Tampilkan.Print Tab(5); "Saldo     : "; RKanan(RSNasabah!Saldo, "###,###,###")
End Sub
```



*Harga program Rp.50.000.* Peminat silakan transfer ke 066-0525-947 (BCA) atau 156-000-250-214 (Mandiri) atau 0139-0106-3038-504 (BRI) an. Uus Rasmawan  
Email : [uusrusmawan@yahoo.com](mailto:uusrusmawan@yahoo.com)

## Fasilitas ATM

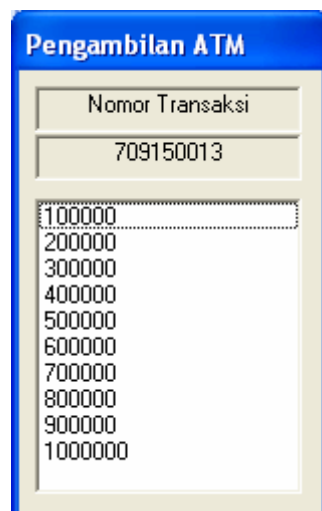
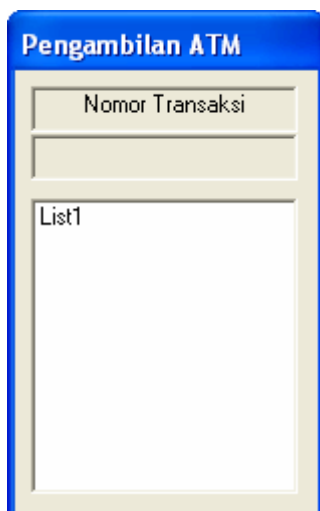


## Informasi Saldo

```
Private Sub Command1_Click()  
Call BukaDB  
RSNasabah.Open "select * from nasabah where norek='" & LblNoRek & "'", Conn  
If Not RSNasabah.EOF Then  
    MsgBox "Nama : " & RSNasabah!Namansb & " " & Chr(13) & _  
        "Saldo : Rp. " & Format(RSNasabah!Saldo, "###,###,###") & " "  
End If  
End Sub
```



## Penarikan Dana



**Harga program Rp.50.000.** Peminat silakan transfer ke 066-0525-947 (BCA) atau 156-000-250-214 (Mandiri) atau 0139-0106-3038-504 (BRI) an. Uus Rasmawan  
Email : [uusrusmawan@yahoo.com](mailto:uusrusmawan@yahoo.com)

```
Private Sub List1_KeyPress(Keyascii As Integer)
If Keyascii = 27 Then Unload Me
If Keyascii = 13 Then
    Call BukaDB
    RSNasabah.Open "Select * from nasabah where PIN='" & ATM.TxtPin & "' and norek='" & ATM.LblNoRek &
"' and Nokartu='" & ATM.LblNoKartu & "'", Conn
    If Not RSNasabah.EOF Then
        If RSNasabah!Saldo < Val(List1) Then
            MsgBox "Dana tidak cukup" & Chr(13) & _
                "Saldo Anda tinggal Rp. " & Format(RSNasabah!Saldo, "###,###,###") & " "
        Else
            Pesan = MsgBox("Jumlah Pengambilan :<<" & List1 & ">> Data sudah benar..?", vbYesNo,
"Konfirmasi")
            If Pesan = vbYes Then
                Dim Edit As String
                Edit = "Update nasabah set saldo='" & RSNasabah!Saldo - List1 & "' where PIN='" &
ATM.TxtPin & "' and norek='" & ATM.LblNoRek & "' and Nokartu='" & ATM.LblNoKartu & "'"
                Conn.Execute Edit

                Dim SimpanTransaksi As String
                SimpanTransaksi = "Insert into
Transaksi(NoTransaksi,NoRek,Tanggal,Jam,Pengeluaran,Keterangan,NoATM) values " & Chr(13) & _
                "(" & Nomor & "," & ATM.LblNoRek & "," & CDate(ATM.LblTanggal) & "," & _
ATM.LblJam & "," & List1 & "," & Ambil2.Caption & "," & ATM.LblNoATM & ")"
                Conn.Execute SimpanTransaksi
                RSNasabah.Requery

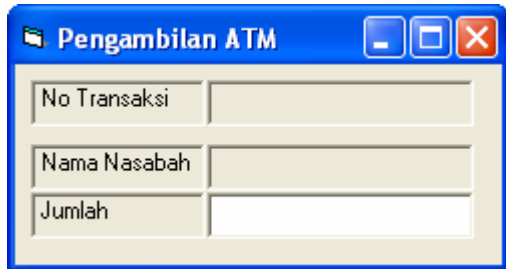
                Form_Activate
                Unload Me
                Menu.DT.Refresh
                CetakLayar
            End If
        End If
    End If
End If
If Not (Keyascii >= Asc("0") And Keyascii <= Asc("9") Or Keyascii = vbKeyBack) Then Keyascii = 0
End Sub

Sub CetakLayar()
Tampilkan.Show
Tampilkan.Font = "Courier New"
Call BukaDB
RSTransaksi.Open "select * from Transaksi Where NoTransaksi In(Select Max(NoTransaksi)From Transaksi
)Order By NoTransaksi Desc", Conn
RSNasabah.Open "select * from Nasabah where NoRek='" & RSTransaksi!norek & "'", Conn
RSAtm.Open "select * from ATM where NoATM='" & RSTransaksi!NoATM & "'", Conn
Tampilkan.Print
Tampilkan.Print
Tampilkan.Print Tab(5); "Bukti Pengambilan (ATM) "
Tampilkan.Print
Tampilkan.Print Tab(5); "Nomor      : "; RSTransaksi!NoTransaksi
Tampilkan.Print Tab(5); "Tanggal   : "; RSTransaksi!Tanggal
Tampilkan.Print Tab(5); "Jam       : "; RSTransaksi!Jam
Tampilkan.Print Tab(5); "ATM       : "; RSAtm!NamaAtm
Tampilkan.Print Tab(5); "Nasabah   : "; RSNasabah!Namansb
Tampilkan.Print Tab(5); "Jumlah Rp : "; RKanan(RSTransaksi!Pengeluaran, "###,###,###")
Tampilkan.Print Tab(5); "Saldo Rp  : "; RKanan(RSNasabah!Saldo, "###,###,###")
End Sub
```



*Harga program Rp.50.000.* Peminat silakan transfer ke 066-0525-947 (BCA) atau 156-000-250-214 (Mandiri) atau 0139-0106-3038-504 (BRI) an. Uus Rasmawan  
Email : [uusrusmawan@yahoo.com](mailto:uusrusmawan@yahoo.com)

## Penarikan Manual



```
Private Sub TxtJumlahAbl_KeyPress(Keyascii As Integer)
If Keyascii = 27 Then Unload Me
If Keyascii = 13 Then
    Call BukaDB
    RSNasabah.Open "Select * from nasabah where PIN='" & ATM.TxtPin & "' and norek='" & ATM.LblNoRek &
"' and Nokartu='" & ATM.LblNoKartu & "'", Conn
    If Not RSNasabah.EOF Then
        If RSNasabah!Saldo < Val(TxtJumlahAbl) Then
            MsgBox "Dana tidak cukup" & Chr(13) & _
                "Saldo Anda tinggal Rp. " & Format(RSNasabah!Saldo, "###,###,###") & "
            TxtJumlahAbl = ""
            Exit Sub
        Else
            Pesan = MsgBox("Jumlah Pengambilan :<<" & TxtJumlahAbl & ">> Data sudah benar..?", vbYesNo,
"Konfirmasi")
            If Pesan = vbYes Then
                Dim Edit As String
                Edit = "Update nasabah set saldo='" & RSNasabah!Saldo - TxtJumlahAbl & "' where PIN='"
& ATM.TxtPin & "' and norek='" & ATM.LblNoRek & "' and Nokartu='" & ATM.LblNoKartu & "'", Conn 'where
norek='" & lblnorek & "'"
                Conn.Execute Edit

                Dim SimpanTransaksi As String
                SimpanTransaksi = "Insert into
Transaksi(NoTransaksi,NoRek,Tanggal,Jam,Pengeluaran,Keterangan,NoATM) values " & Chr(13) & _
                "(" & Nomor & "," & ATM.LblNoRek & "," & CDate(ATM.LblTanggal) & "," &
ATM.LblJam & "," & TxtJumlahAbl & "," & AmbilAtm.Caption & "," & ATM.LblNoATM & ")"
                Conn.Execute SimpanTransaksi
                RSNasabah.Requery

                Unload Me
                Menu.DT.Refresh
                CetakLayar
            End If
        End If
    End If
End If
If Not (Keyascii >= Asc("0") And Keyascii <= Asc("9") Or Keyascii = vbKeyBack) Then Keyascii = 0
End Sub

Sub CetakLayar()
Tampilkan.Show
Tampilkan.Font = "Courier New"
Call BukaDB
RSTransaksi.Open "select * from Transaksi Where NoTransaksi In(Select Max(NoTransaksi)From Transaksi
)Order By NoTransaksi Desc", Conn
RSNasabah.Open "select * from Nasabah where NoRek='" & RSTransaksi!norek & "'", Conn
RSAtm.Open "select * from ATM where NoATM='" & RSTransaksi!NoATM & "'", Conn
Tampilkan.Print
Tampilkan.Print
Tampilkan.Print Tab(5); "Bukti Pengambilan (ATM)"
Tampilkan.Print
Tampilkan.Print Tab(5); "Nomor      : "; RSTransaksi!NoTransaksi
Tampilkan.Print Tab(5); "Tanggal    : "; RSTransaksi!Tanggal
Tampilkan.Print Tab(5); "Jam        : "; RSTransaksi!Jam
Tampilkan.Print Tab(5); "ATM        : "; RSAtm!NamaAtm
Tampilkan.Print Tab(5); "Nasabah    : "; RSNasabah!Namansb
Tampilkan.Print Tab(5); "Jumlah Rp  : "; RKanan(RSTransaksi!Pengeluaran, "###,###,###")
Tampilkan.Print Tab(5); "Saldo Rp   : "; RKanan(RSNasabah!Saldo, "###,###,###")
End Sub
```

*Harga program Rp.50.000.* Peminat silakan transfer ke 066-0525-947 (BCA) atau 156-000-250-214 (Mandiri) atau 0139-0106-3038-504 (BRI) an. Uus Rasmawan  
Email : [uusrusmawan@yahoo.com](mailto:uusrusmawan@yahoo.com)

## Transfer Dana



### Coding

```
Private Sub TxtJumlahTsf_KeyPress(Keyascii As Integer)
If Keyascii = 27 Then Unload Me
If Keyascii = 13 Then
    Call BukaDB
    RSNasabah.Open "select * from nasabah where pin='" & ATM.TxtPin & "' and Norek='" & ATM.LblNoRek &
"' and NoKartu='" & ATM.LblNoKartu & "'", Conn
    If RSNasabah!Saldo < Val(TxtJumlahTsf) Then
        MsgBox "Dana tidak cukup" & Chr(13) & _
        "Saldo hanya Rp. " & Format(RSNasabah!Saldo, "###,###,###") & " "
        TxtJumlahTsf = ""
        TxtJumlahTsf.SetFocus
        Exit Sub
        Conn.Close
    Else
        Pesan = MsgBox("Data sudah benar", vbYesNo, "Konfirmasi")
        If Pesan = vbYes Then
            Call BukaDB
            RSNasabah.Open "select * from nasabah where pin='" & ATM.TxtPin & "' and Norek='" &
ATM.LblNoRek & "' and NoKartu='" & ATM.LblNoKartu & "'", Conn
            Dim KurangiSaldoPengirim As String
            KurangiSaldoPengirim = "Update nasabah set saldo=" & RSNasabah!Saldo - TxtJumlahTsf & "
where pin='" & ATM.TxtPin & "' and Norek='" & ATM.LblNoRek & "' and NoKartu='" & ATM.LblNoKartu & "'"
            Conn.Execute KurangiSaldoPengirim
            Conn.Close

            Call BukaDB
            RSNasabah.Open "select * from nasabah where norek='" & TxtNoTujuan & "'", Conn
            Dim TambahSaldoPenerima As String
            TambahSaldoPenerima = "Update nasabah set saldo=" & RSNasabah!Saldo + TxtJumlahTsf & "
where norek='" & TxtNoTujuan & "'"
            Conn.Execute TambahSaldoPenerima
            Conn.Close

            Call BukaDB
            Dim SimpanTransaksi1 As String
            SimpanTransaksi1 = "insert into
Transaksi (NoTransaksi,NoRek,Tanggal,Jam,Pengeluaran,Keterangan,NorekTjn,NoATM) values " & Chr(13) & _
"(' " & Nomor & "',' " & ATM.LblNoRek & "',' " & ATM.LblTanggal & "',' " & ATM.LblJam & "',' " &
TxtJumlahTsf & "',' " & Transfer.Caption + " Ke " + Penerima & "',' " & TxtNoTujuan & "',' " &
ATM.LblNoATM & "'"
            Conn.Execute SimpanTransaksi1
            Conn.Close

            Call BukaDB
            Dim SimpanTransaksi2 As String
            SimpanTransaksi2 = "insert into
Transaksi (NoTransaksi,NoRek,Tanggal,Jam,Pemasukan,Keterangan,NoATM) values " & Chr(13) & _
"(' " & Nomor + 1 & "',' " & TxtNoTujuan & "',' " & ATM.LblTanggal & "',' " & ATM.LblJam &
"', " & TxtJumlahTsf & "',' " & Transfer.Caption + " Dari " + Pengirim & "',' " & ATM.LblNoATM & "'"
            Conn.Execute SimpanTransaksi2
            Conn.Close
```

**Harga program Rp.50.000.** Peminat silakan transfer ke 066-0525-947 (BCA) atau 156-000-250-214 (Mandiri) atau 0139-0106-3038-504 (BRI) an. Uus Rusmawan  
Email : [uusrusmawan@yahoo.com](mailto:uusrusmawan@yahoo.com)

```
Unload Me
Menu.DT.Refresh
CetakLayar
End If
End If
End If
If Not (Keyascii >= Asc("0") And Keyascii <= Asc("9") Or Keyascii = vbKeyBack) Then Keyascii = 0
End Sub

Sub CetakLayar()
Tampilkan.Show
Tampilkan.Font = "Courier New"
Call BukaDB
DT.ConnectionString = "Provider=Microsoft.Jet.OLEDB.4.0;Data Source= " & App.Path & "\ADOBank.mdb"
DT.RecordSource = "Transaksi"
DT.Refresh
DT.Recordset.MoveLast
DT.Recordset.MovePrevious
RSNasabah.Open "select * from Nasabah where NoRek='" & DT.Recordset!norek & "'", Conn
Tampilkan.Print
Tampilkan.Print
Tampilkan.Print Tab(5); "Bukti Transfer (ATM) "
Tampilkan.Print
Tampilkan.Print Tab(5); "Nomor      : "; DT.Recordset!NoTransaksi
Tampilkan.Print Tab(5); "Tanggal   : "; DT.Recordset!Tanggal
Tampilkan.Print Tab(5); "Jam       : "; DT.Recordset!Jam
Tampilkan.Print Tab(5); "ATM      : "; DT.Recordset!NoATM
Tampilkan.Print Tab(5); "Pengirim  : "; RSNasabah!Namansb
Conn.Close
Call BukaDB
RSNasabah.Open "select * from Nasabah where NoRek='" & DT.Recordset!NoRekTjn & "'", Conn
Tampilkan.Print Tab(5); "Penerima : "; RSNasabah!Namansb
Tampilkan.Print Tab(5); "Jumlah   : "; Format(DT.Recordset!Pengeluaran, "###,###,###")
End Sub
```



## Bayar Tagihan

Data tagihan disimpan dalam tabel Tagihan dengan rincian sebagai berikut.

Tagihan			
NomorPlg	NamaPlg	Tagihan	Status
12345	RUSMAN	90000	
23456	RYAN	85000	
34567	HAFIZ	120000	
45678	ALBANI	100000	
56789	RISNA	50000	

*Harga program Rp.50.000.* Peminat silakan transfer ke 066-0525-947 (BCA) atau 156-000-250-214 (Mandiri) atau 0139-0106-3038-504 (BRI) an. Uus Rasmawan  
Email : [uusrusmawan@yahoo.com](mailto:uusrusmawan@yahoo.com)



### Coding

```
Private Sub TxtNoTujuan_KeyPress(Keyascii As Integer)
If Keyascii = 27 Then Unload Me: ATM.Show
If Keyascii = 13 Then
    Call BukaDB
    RSNasabah.Open "select * from Nasabah where NoRek='" & TxtNoTujuan & "'", Conn
    If Not RSNasabah.EOF Then
        NamaPrsh = RSNasabah!Namansb
        Pesan = MsgBox("Lakukan pembayaran..?", vbYesNo, "Konfirmasi")
        If Pesan = vbYes Then
            Call BukaDB
            RSNasabah.Open "select * from nasabah where Pin='" & ATM.TxtPin & "' and Norek='" &
ATM.LblNoRek & "' and NoKartu='" & ATM.LblNoKartu & "'", Conn
            If Not RSNasabah.EOF Then
                If RSNasabah!Saldo < Val(Tagihan) Then
                    MsgBox "Dana Anda tidak cukup" & Chr(13) & _
                        "Saldo Anda hanya Rp. " & Format(RSNasabah!Saldo, "###,###,###") & "
                    Unload Me
                    ATM.Show
                    Exit Sub
                Else
                    Dim EditDanaNsb As String
                    EditDanaNsb = "Update nasabah set saldo='" & RSNasabah!Saldo - Tagihan & "' where
Pin='" & ATM.TxtPin & "' and Norek='" & ATM.LblNoRek & "' and NoKartu='" & ATM.LblNoKartu & "'"
                    Conn.Execute EditDanaNsb
                End If
            End If

            Call BukaDB
            RSNasabah.Open "select * from nasabah where Norek='" & TxtNoTujuan & "'", Conn
            Dim TambahSaldoTelkom As String
            TambahSaldoTelkom = "Update nasabah set saldo='" & RSNasabah!Saldo + Tagihan & "' where
norek='" & TxtNoTujuan & "'"
            Conn.Execute TambahSaldoTelkom

            Dim EditDataTgh As String
            EditDataTgh = "Update tagihan set Status='Lunas' where NomorPlg='" & TxtNomorPlg & "'"
            Conn.Execute EditDataTgh

            Call BukaDB
            RSTransaksi.Open "Transaksi", Conn
            Dim SimpanTransaksi1 As String
            SimpanTransaksi1 = "Insert into
Transaksi(NoTransaksi,NoRek,Tanggal,Jam,Pengeluaran,Keterangan,NomorPlg,NoRekTjn,NoATM) values " &
Chr(13) & _
            "(" & Nomor & "','" & ATM.LblNoRek & "','" & CDate(ATM.LblTanggal) & "','" & ATM.LblJam &
            "','" & Tagihan & "','" & Pembayaran.Caption & "','" & TxtNomorPlg & "','" & TxtNoTujuan & "','" &
ATM.LblNoATM & "'"
            Conn.Execute SimpanTransaksi1
            Conn.Close

            Call BukaDB
            RSTransaksi.Open "Transaksi", Conn
            Dim SimpanTransaksi2 As String
            SimpanTransaksi2 = "insert into
Transaksi(NoTransaksi,NoRek,Tanggal,Jam,Pemasukan,Keterangan,NoATM) values " & Chr(13) & _
```

**Harga program Rp.50.000.** Peminat silakan transfer ke 066-0525-947 (BCA) atau 156-000-250-214 (Mandiri) atau 0139-0106-3038-504 (BRI) an. Uus Rasmawan  
Email : [uusrusmawan@yahoo.com](mailto:uusrusmawan@yahoo.com)

```

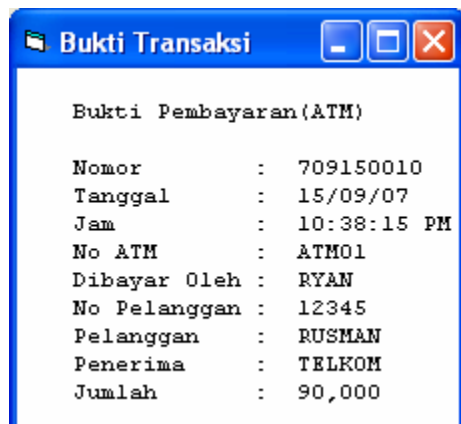
    "(" & Nomor + 1 & "," & TxtNoTujuan & "," & ATM.LblTanggal & "," & ATM.LblJam &
    "," & Tagihan & "," & Pembayaran.Caption + " Dari " + NamaPlg & "," & ATM.LblNoATM & ")
    Conn.Execute SimpanTransaksi2
    Conn.Close

    'Dim HapusTagihan As String
    'HapusTagihan = "delete * from Tagihan where nomorplg='" & TxtNomorPlg & "'"
    'Conn.Execute HapusTagihan

    Form_Activate
    Unload Me
    CetakLayar
Else
    Unload Me
    Exit Sub
End If
Else
    MsgBox "Nomor rekening Tujuan tidak terdaftar"
    TxtNoTujuan.SetFocus
    Exit Sub
End If
End If
Menu.DT.Refresh
If Not (Keyascii >= Asc("0") And Keyascii <= Asc("9") Or Keyascii = vbKeyBack) Then Keyascii = 0
End Sub

Sub CetakLayar()
    Tampilkan.Show
    Tampilkan.Font = "Courier New"
    Call BukaDB
    DT.ConnectionString = "Provider=Microsoft.Jet.OLEDB.4.0;Data Source= " & App.Path & "\ADOBank.mdb"
    DT.RecordSource = "Transaksi"
    DT.Refresh
    DT.Recordset.MoveLast
    DT.Recordset.MovePrevious

    RSNasabah.Open "select * from Nasabah where NoRek='" & DT.Recordset!norek & "'", Conn
    RSTagihan.Open "select * from Tagihan where NomorPlg='" & DT.Recordset!NomorPlg & "'", Conn
    Tampilkan.Print
    Tampilkan.Print
    Tampilkan.Print Tab(5); "Bukti Pembayaran(ATM) "
    Tampilkan.Print
    Tampilkan.Print Tab(5); "Nomor          : "; DT.Recordset!NoTransaksi
    Tampilkan.Print Tab(5); "Tanggal          : "; DT.Recordset!Tanggal
    Tampilkan.Print Tab(5); "Jam              : "; DT.Recordset!Jam
    Tampilkan.Print Tab(5); "No ATM           : "; DT.Recordset!NoATM
    Tampilkan.Print Tab(5); "Dibayar Oleh    : "; RSNasabah!Namansb
    Tampilkan.Print Tab(5); "Pelanggan       : "; RSTagihan!NamaPlg
    Conn.Close
    Call BukaDB
    RSNasabah.Open "select * from Nasabah where NoRek='" & DT.Recordset!NoRekTjn & "'", Conn
    Tampilkan.Print Tab(5); "Penerima        : "; RSNasabah!Namansb
    Tampilkan.Print Tab(5); "Jumlah          : "; Format(DT.Recordset!Pengeluaran, "###,###,###")
End Sub
```



*Harga program Rp.50.000.* Peminat silakan transfer ke 066-0525-947 (BCA) atau 156-000-250-214 (Mandiri) atau 0139-0106-3038-504 (BRI) an. Uus Rasmawan  
Email : [uusrusmawan@yahoo.com](mailto:uusrusmawan@yahoo.com)

## Ganti PIN



### Coding

```
Private Sub Text1_KeyPress(Keyascii As Integer)
If Keyascii = 27 Then Unload Me
If Keyascii = 13 Then
    If Len(Text1) <> 6 Then
        MsgBox "Nomor Pin Harus 6 digit"
        Text1 = ""
        Text1.SetFocus
        Exit Sub
    End If
    If Text1 <> ATM.TxtPin Then
        MsgBox "PIN salah"
        Text1 = ""
        Text1.SetFocus
    Else
        Call BukaDB
        RSNasabah.Open "select * from nasabah where Pin='" & Text1 & "'", Conn
        If Not RSNasabah.EOF Then
            Text1.Enabled = False
            Text2.Enabled = True
            Text2.SetFocus
            LblNoRek = RSNasabah!norek
            LblNoKartu = RSNasabah!Nokartu
        Else
            MsgBox "Pin Salah"
            Text1 = ""
            Text1.SetFocus
        End If
        Conn.Close
    End If
End If
If Not (Keyascii >= Asc("0") And Keyascii <= Asc("9") Or Keyascii = vbKeyBack) Then Keyascii = 0
End Sub

Private Sub Text2_KeyPress(Keyascii As Integer)
If Keyascii = 27 Then Unload Me
If Keyascii = 13 Then
    If Len(Text2) <> 6 Then
        MsgBox "Nomor Pin Harus 6 digit"
        Text2 = ""
        Text2.SetFocus
        Exit Sub
    Else
        Call BukaDB
        RSNasabah.Open "select * from nasabah where PIN='" & Text2 & "'", Conn
        If Not RSNasabah.EOF Then
            MsgBox "PIN ini sudah ada, ganti nomor lain"
            Text2 = ""
            Text2.SetFocus
            Exit Sub
        End If
        Conn.Close
    End If
    MsgBox "Ketik No PIN yang sama sekali lagi"
    Text2.Enabled = False
End Sub
```

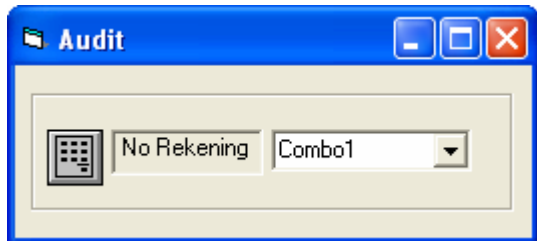
**Harga program Rp.50.000.** Peminat silakan transfer ke 066-0525-947 (BCA) atau 156-000-250-214 (Mandiri) atau 0139-0106-3038-504 (BRI) an. Uus Rasmawan  
Email : [uusrusmawan@yahoo.com](mailto:uusrusmawan@yahoo.com)

```

Text3.Enabled = True
Text3 = ""
Text3.SetFocus
End If
If Not (Keyascii >= Asc("0") And Keyascii <= Asc("9") Or Keyascii = vbKeyBack) Then Keyascii = 0
End Sub

```

## Jejak Transaksi



### Coding

```

Private Sub Combo1_KeyPress(Keyascii As Integer)
If Keyascii = 27 Then Unload Me
If Keyascii = 13 Then
    If Len(Combo1) < 10 Then
        MsgBox "Nomor Rekening harus 10 digit"
        Combo1.SetFocus
        Exit Sub
    End If
    Call BukaDB
    RSNasabah.Open "select * from nasabah where Norek='" & Combo1 & "'", Conn
    If Not RSNasabah.EOF Then
        CrystalReport1.SelectionFormula = "{Transaksi.Norek}='" & Combo1 & "'"
        CrystalReport1.ReportFileName = App.Path & "\Lap Jejak.rpt"
        CrystalReport1.WindowState = crptMaximized
        CrystalReport1.RetrieveDataFiles
        CrystalReport1.Action = 1
    Else
        MsgBox "Nomor Rekening tidak terdaftar"
        Combo1.SetFocus
        Exit Sub
    End If
End If
End Sub

```

### LAPORAN JEJAK TRANSAKSI

<b>No Rekening</b>	1451636136		
<b>Nama Nasab</b>	ALBANI		
<b>Tanggal</b>	<b>Pemasukan</b>	<b>Pengeluaran</b>	<b>Keterangan</b>
15/09/07	Rp 500,000	Rp 0	Buka Rekening
15/09/07	Rp 250,000	Rp 0	Setoran Kas
15/09/07	Rp 0	Rp 100,000	Pengambilan Kas
15/09/07	Rp 0	Rp 100,000	Pengambilan ATM
15/09/07	Rp 0	Rp 50,000	Transfer Dana Ke RYAN
15/09/07	Rp 0	Rp 120,000	Bayar Telepon
<b>Total</b>	<b>Rp 750,000</b>	<b>Rp 370,000</b>	
<b>Saldo</b>	<b>Rp 380,000</b>		

*Harga program Rp.50.000.* Peminat silakan transfer ke 066-0525-947 (BCA) atau 156-000-250-214 (Mandiri) atau 0139-0106-3038-504 (BRI) an. Uus Rusmawan  
Email : [uusrusmawan@yahoo.com](mailto:uusrusmawan@yahoo.com)

