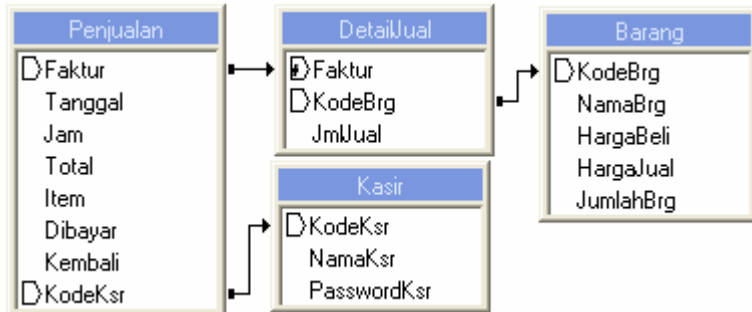


*Harga program Rp.50.000.* Peminat silakan transfer ke 066-0525-947 (BCA) atau 156-000-250-214 (Mandiri) atau 0139-0106-3038-504 (BRI) an. Uus Rusmawan  
Email : [uusrusmawan@yahoo.com](mailto:uusrusmawan@yahoo.com)

# PROGRAM PENJUALAN (FULL SOURCE CODE)

## Normalisasi File



## Form Login

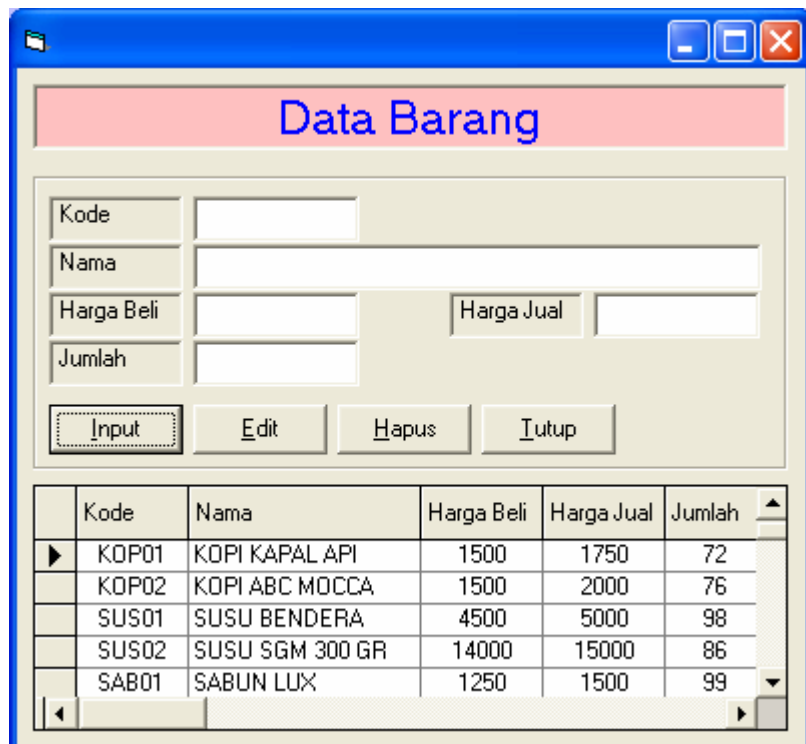
The Login form is a simple window with a title bar and a pink header containing the word "Login". It features two input fields: "Nama User" and "Password".

## Form Kasir

The Data Kasir form is a window with a title bar and a pink header containing the text "Data Kasir". It contains three input fields: "Kode", "Nama", and "Password". Below these fields are four buttons: "Input", "Edit", "Hapus", and "Tutup".

*Harga program Rp.50.000.* Peminat silakan transfer ke 066-0525-947 (BCA) atau 156-000-250-214 (Mandiri) atau 0139-0106-3038-504 (BRI) an. Uus Rusmawan  
Email : [uusrusmawan@yahoo.com](mailto:uusrusmawan@yahoo.com)

## Form Barang



Kode	Nama	Harga Beli	Harga Jual	Jumlah
KOP01	KOPI KAPAL API	1500	1750	72
KOP02	KOPI ABC MOCCA	1500	2000	76
SUS01	SUSU BENDERA	4500	5000	98
SUS02	SUSU SGM 300 GR	14000	15000	86
SAB01	SABUN LUX	1250	1500	99

## Transaksi Penjualan



Nomor	Kode	Nama	Harga	Jumlah	Total
1	KOP02	KOPI ABC MOCCA	2,000	1	2,000
2	KOP01	KOPI KAPAL API	1,750	2	3,500
3	MIE01	MIE SOTO	1,500	3	4,500
4					
5					
6					
7					
8					
9					
10					

Item	6	Total	10,000
Stok	48	Dibayar	10,000
		Kembali	0

KOPI ABC MOCCA  
KOPI KAPAL API  
MIE SEDAP GORENG  
MIE SOTO  
PEPSODENT KECIL  
PEPSODENT SEDANG  
SABUN GIV  
SABUN LUX  
SUSU BENDERA  
SUSU SGM 300 GR

**Harga program Rp.50.000.** Peminat silakan transfer ke 066-0525-947 (BCA) atau 156-000-250-214 (Mandiri) atau 0139-0106-3038-504 (BRI) an. Uus Rasmawan  
Email : [uusrusmawan@yahoo.com](mailto:uusrusmawan@yahoo.com)

```
Private Sub Form_Activate()  
Adodc1.ConnectionString = "Provider=Microsoft.Jet.OLEDB.4.0;Data Source= " & App.Path & "\ADOJual.mdb"  
Adodc1.RecordSource = "Transaksi"  
Set DTGrid.DataSource = Adodc1  
DTGrid.Refresh  
  
If KodeKsr = "" Then  
    MsgBox "Kasir tidak terdeteksi"  
    Login.Show  
    Exit Sub  
End If  
  
Call BukaDB  
RSBarang.Open "Barang", Conn  
List1.Clear  
Do Until RSBarang.EOF  
    List1.AddItem RSBarang!NamaBrg & Space(50) & RSBarang!KodeBrg  
    RSBarang.MoveNext  
Loop  
  
Call Auto  
Call Tabel_Kosong  
Adodc1.Recordset.MoveFirst  
  
Tanggal = Date  
CmdSimpan.Enabled = False  
End Sub  
  
Private Sub Form_Load()  
    KodeKsr = Login.TxtKodeKsr  
    NamaKsr = Login.TxtNamaKsr  
    DTGrid.Col = 1  
    CmdSimpan.Enabled = False  
End Sub  
  
Private Sub DTGrid_KeyDown(KeyCode As Integer, Shift As Integer)  
Select Case KeyCode  
    Case vbKeyEscape  
        Adodc1.Recordset!Kode = Null  
        Adodc1.Recordset!Nama = Null  
        Adodc1.Recordset!Harga = Null  
        Adodc1.Recordset!Jumlah = Null  
        Adodc1.Recordset!Total = Null  
        Adodc1.Recordset.Update  
        Call TotalItem  
        Call TotalHarga  
        DTGrid.Refresh  
End Select  
End Sub  
  
Private Sub Bersihkan()  
    Item = ""  
    Total = ""  
    Dibayar = ""  
    Kembali = ""  
End Sub  
  
Private Sub Dibayar_KeyPress(Keyascii As Integer)  
    If Keyascii = 13 Then  
        If Dibayar = "" Or Val(Dibayar) < (Total) Then  
            MsgBox "Jumlah Pembayaran Kurang"  
            Dibayar.SetFocus  
        Else  
            Dibayar = Format(Dibayar, "###,###,###")  
            If Dibayar = Total Then  
                Kembali = Dibayar - Total  
            Else  
                Kembali = Format(Dibayar - Total, "###,###,###")  
            End If  
            CmdSimpan.Enabled = True  
            CmdSimpan.SetFocus  
        End If  
    End If  
    If Not (Keyascii >= Asc("0") And Keyascii <= Asc("9") Or Keyascii = vbKeyBack) Then Keyascii = 0
```

**Harga program Rp.50.000.** Peminat silakan transfer ke 066-0525-947 (BCA) atau 156-000-250-214 (Mandiri) atau 0139-0106-3038-504 (BRI) an. Uus Rusmawan  
Email : [uusrusmawan@yahoo.com](mailto:uusrusmawan@yahoo.com)

```
End Sub
```

```
Private Sub CmdSimpan_Keypress(Keyascii As Integer)
    If Keyascii = 27 Then
        CmdSimpan.Enabled = False
        Dibayar = ""
        Dibayar.SetFocus
    End If
End Sub
```

```
Private Sub CmdBatal_Click()
    Dibayar = ""
    Total = ""
    Item = ""
    Form_Activate
End Sub
```

```
Private Sub Cmdodclutup_Click()
    Unload Me
End Sub
```

```
Function Cetak()
    Call BukaDB
    RSPenjualan.Open "select * from penjualan Where Faktur In(Select Max(Faktur)From penjualan)Order By Faktur Desc", Conn
    Layar.Show
    Dim Total, JmlJual, JmlHasil As Double
    Dim MGrS As String
    Layar.Font = "Courier New"
    Layar.Print
    Layar.Print
    RSKasir.Open "select * From Kasir where KodeKsr= '" & RSPenjualan!KodeKsr & "'", Conn
    Layar.Print Tab(5); "Faktur      :   "; RSPenjualan!Faktur
    Layar.Print Tab(5); "Tanggal    :   "; Format(RSPenjualan!Tanggal, "DD-MMMM-YYYY")
    Layar.Print Tab(5); "Jam        :   "; Format(RSPenjualan!Jam, "HH:MM:SS")
    Layar.Print Tab(5); "Kasir      :   "; RSKasir!NamaKsr
    MGrS = String$(33, "-")
    Layar.Print Tab(5); MGrS
    RSDetailJual.Open "select * from detailjual Where left(Faktur,10)='" & RSPenjualan!Faktur & "'", Conn
    RSDetailJual.MoveFirst
    No = 0
    Do While Not RSDetailJual.EOF
        No = No + 1
        Set RSBarang = New ADODB.Recordset
        RSBarang.Open "select * From Barang where Kodebrg= '" & RSDetailJual!KodeBrg & "'", Conn
        RSBarang.Requery
        Harga = RSBarang!HargaJual
        Jumlah = RSDetailJual!JmlJual
        Hasil = Harga * Jumlah
        Layar.Print Tab(5); No; Space(2); RSBarang!NamaBrg
        Layar.Print Tab(10); RKanan(Jumlah, "##"); Space(1); "X";
        Layar.Print Tab(15); Format(Harga, "###,###,###");
        Layar.Print Tab(25); RKanan(Hasil, "###,###,###")
        RSDetailJual.MoveNext
    Loop
    Layar.Print Tab(5); MGrS
    Layar.Print Tab(5); "Total      :";
    Layar.Print Tab(25); RKanan(RSPenjualan!Total, "###,###,###");
    Layar.Print Tab(5); "Dibayar    :";
    Layar.Print Tab(25); RKanan(RSPenjualan!Dibayar, "###,###,###");
    Layar.Print Tab(5); MGrS
    Layar.Print Tab(5); "Kembali    :";
    If RSPenjualan!Dibayar = RSPenjualan!Total Then
        Layar.Print Tab(34); RSPenjualan!Dibayar - RSPenjualan!Total
    Else
        Layar.Print Tab(25); RKanan(RSPenjualan!Dibayar - RSPenjualan!Total, "###,###,###");
    End If
    Layar.Print Tab(5); MGrS
    Layar.Print Tab(5); "Terima Kasih atas kunjungan Anda"
    Layar.Print
    Layar.Print
    Layar.Print
    Conn.Close
End Function
```


**Harga program Rp.50.000.** Peminat silakan transfer ke 066-0525-947 (BCA) atau 156-000-250-214 (Mandiri) atau 0139-0106-3038-504 (BRI) an. Uus Rusmawan  
Email : [uusrusmawan@yahoo.com](mailto:uusrusmawan@yahoo.com)

```
Private Function RKanan(NData, CFormat) As String
    RKanan = Format(NData, CFormat)
    RKanan = Space(Len(CFormat) - Len(RKanan)) + RKanan
End Function

Private Sub List1_keyPress(Keyascii As Integer)
    If Keyascii = 13 Then
        If DTGrid.SelText <> Right(List1, 5) Then
            DTGrid.SelText = Right(List1, 5)
            Adodc1.Recordset.Update
            Call BukaDB
            RSBarang.Open "Select * from Barang where KodeBrg='" & Right(List1, 5) & "'", Conn,
adOpenDynamic, adLockOptimistic
            RSBarang.Requery
            If Not RSBarang.EOF Then
                Adodc1.Recordset!Kode = RSBarang!KodeBrg
                Adodc1.Recordset!Nama = RSBarang!NamaBrg
                Adodc1.Recordset!Harga = RSBarang!HargaJual
                Adodc1.Recordset.Update
                DTGrid.SetFocus
                DTGrid.Col = 4
            End If
        End If
    End If
End Sub

Private Sub CmdTutup_Click()
Unload Me
End Sub
```

## Faktur Penjualan



The screenshot shows a receipt window with the following text:

```
ESC=Tutup *** Enter=Cetak

Faktur      : 1004210001
Tanggal     : 21-April-2010
Jam        : 17:24:57
Kasir      : UUS

-----
1 KOPI ABC MOCCA
  1 X 2,000          2,000
2 KOPI KAPAL API
  2 X 1,750          3,500
3 MIE SOTO
  3 X 1,500          4,500
-----
Total       : 10,000
Dibayar    : 10,000
-----
Kembali     : 0
-----

Terima Kasih atas kunjungan Anda
```

*Harga program Rp.50.000.* Peminat silakan transfer ke 066-0525-947 (BCA) atau 156-000-250-214 (Mandiri) atau 0139-0106-3038-504 (BRI) an. Uus Rusmawan  
Email : [uusrusmawan@yahoo.com](mailto:uusrusmawan@yahoo.com)

## Laporan Penjualan

### LAPORAN PENJUALAN HARIAN

Tanggal : 06/November/2007

Nama Barang	Harga	Jumlah	Total
KOPI KAPAL API	Rp 1,750	1	Rp 1,750
MIE SOTO	Rp 1,500	2	Rp 3,000
PEPSODENT KECIL	Rp 3,000	3	Rp 9,000
SABUN LUX	Rp 1,500	2	Rp 3,000
<b>Total</b>		<b>8</b>	<b>Rp 16,750</b>

### LAPORAN PENJUALAN MINGGUAN

Tanggal : 08/September/2007

Nama Barang	Harga	Jumlah	Total
KOPI KAPAL API	Rp 1,750	1	Rp 1,750
MIE SOTO	Rp 1,500	2	Rp 3,000
PEPSODENT KECIL	Rp 3,000	3	Rp 9,000
<b>Sub Total</b>		<b>6</b>	<b>Rp 13,750</b>

Tanggal : 09/September/2007

Nama Barang	Harga	Jumlah	Total
KOPI ABC MOCCA	Rp 2,000	2	Rp 4,000
KOPI KAPAL API	Rp 1,750	5	Rp 8,750
MIE SOTO	Rp 1,500	4	Rp 6,000
PEPSODENT KECIL	Rp 3,000	2	Rp 6,000
PEPSODENT SEDANG	Rp 5,500	5	Rp 27,500
SABUN GIV	Rp 1,750	2	Rp 3,500
SABUN LUX	Rp 1,500	4	Rp 6,000
SUSU BENDERA	Rp 5,000	4	Rp 20,000
SUSU SGM 300 GR	Rp 15,000	1	Rp 15,000
<b>Sub Total</b>		<b>29</b>	<b>Rp 96,750</b>
<b>Grand Total</b>		<b>35</b>	<b>Rp 110,500</b>

### LAPORAN PENJUALAN BULANAN

Tanggal : 18/September/2007

Nama Barang	Harga	Jumlah	Total
KOPI ABC MOCCA	Rp 2,000	6	Rp 12,000
KOPI KAPAL API	Rp 1,750	13	Rp 22,750
MIE SOTO	Rp 1,500	12	Rp 18,000
PEPSODENT KECIL	Rp 3,000	6	Rp 18,000
PEPSODENT SEDANG	Rp 5,500	5	Rp 27,500
SABUN GIV	Rp 1,750	2	Rp 3,500
SABUN LUX	Rp 1,500	12	Rp 18,000
SUSU BENDERA	Rp 5,000	4	Rp 20,000
SUSU SGM 300 GR	Rp 15,000	1	Rp 15,000
<b>Grand Total</b>		<b>61</b>	<b>Rp 154,750</b>

*Harga program Rp.50.000.* Peminat silakan transfer ke 066-0525-947 (BCA) atau 156-000-250-214 (Mandiri) atau 0139-0106-3038-504 (BRI) an. Uus Rasmawan  
Email : [uusrusmawan@yahoo.com](mailto:uusrusmawan@yahoo.com)

## Rincian Penjualan

	Nama Barang	Harga Jual	Jumlah	Total
	KOPI KAPAL API	1750	2	3500
	KOPI ABC MOCCA	2000	1	2000
	MIE SOTO	1500	3	4500

Tanggal: 4/21/2010    Kasir: UUS    6    10000

### Coding

```
Private Sub Form_Load()  
On Error Resume Next  
Call BukaDB  
List1.Clear  
RSPenjualan.Open "Select Distinct Faktur from Penjualan ", Conn  
Do Until RSPenjualan.EOF  
    List1.AddItem RSPenjualan!Faktur  
    RSPenjualan.MoveNext  
Loop  
Conn.Close  
Call Gelap  
End Sub  
  
Private Sub list1_click()  
Call BukaDB  
Conn.CursorLocation = adUseClient  
RSPenjualan.Open "select * from Penjualan where Faktur='" & List1.Text & "'", Conn  
RSPenjualan.Requery  
If Not RSPenjualan.EOF Then Text1 = RSPenjualan!Tanggal  
RSkasir.Open "select * from Kasir where KodeKsr='" & RSPenjualan!KodeKsr & "'", Conn  
If Not RSKasir.EOF Then Text2 = RSKasir!NamaKsr  
Conn.Close  
  
Adodc1.ConnectionString = "Provider=Microsoft.Jet.OLEDB.4.0;Data Source= " & App.Path & "\ADOJual.mdb"  
Adodc1.RecordSource = "select NamaBrg as [Nama Barang], HargaJual as [Harga Jual],JmlJual as Jumlah,  
HargaJual*JmlJual as Total from Barang,detailJual,penjualan where DetailJual.kodeBrg=Barang.kodeBrg and  
left(detailjual.faktur,10)=penjualan.faktur and penjualan.faktur='" & List1 & "'">
```

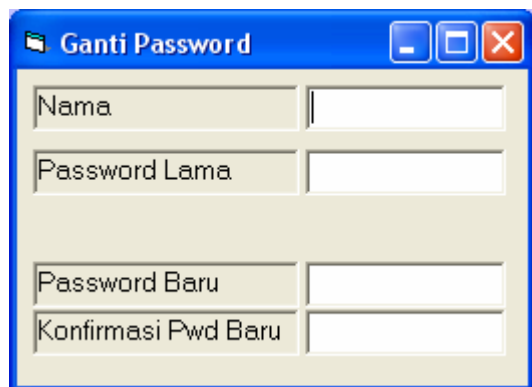
**Harga program Rp.50.000.** Peminat silakan transfer ke 066-0525-947 (BCA) atau 156-000-250-214 (Mandiri) atau 0139-0106-3038-504 (BRI) an. Uus Rusmawan  
Email : [uusrusmawan@yahoo.com](mailto:uusrusmawan@yahoo.com)

```
Function Item()
Adodc1.Recordset.MoveFirst
Jumlah = 0
Do While Not Adodc1.Recordset.EOF
    Jumlah = Jumlah + Adodc1.Recordset!Jumlah
    Adodc1.Recordset.MoveNext
Loop
Text3 = Jumlah
End Function

Function Total()
Adodc1.Recordset.MoveFirst
Jumlah = 0
Do While Not Adodc1.Recordset.EOF
    Jumlah = Jumlah + Adodc1.Recordset!Total
    Adodc1.Recordset.MoveNext
Loop
Text4 = Jumlah
End Function

Sub Gelap()
Text1.Enabled = False
Text2.Enabled = False
Text3.Enabled = False
Text4.Enabled = False
End Sub
```

## Ganti Password User



```
Private Sub Text1_KeyPress(Keyascii As Integer)
If Keyascii = 13 Then
    Call BukaDB
    RSKasir.Open "select * from kasir where namaksr='" & Text1 & "'", Conn
    If Not RSKasir.EOF Then
        Text2.SetFocus
    Else
        MsgBox "nama kasir tidak terdaftar"
        Text1.SetFocus
        Text1 = ""
    End If
End If
End Sub

Private Sub Text2_KeyPress(Keyascii As Integer)
If Keyascii = 13 Then
    Call BukaDB
    RSKasir.Open "select * from kasir where namaksr='" & Text1 & "' and passwordksr='" & Text2 & "'",
Conn
    If Not RSKasir.EOF Then
        Text3.SetFocus
    Else
        MsgBox "password salah "
        Text2.SetFocus
        Text2 = ""
    End If
End If
```

**Harga program Rp.50.000.** Peminat silakan transfer ke 066-0525-947 (BCA) atau 156-000-250-214 (Mandiri) atau 0139-0106-3038-504 (BRI) an. Uus Rasmawan  
Email : [uusrusmawan@yahoo.com](mailto:uusrusmawan@yahoo.com)

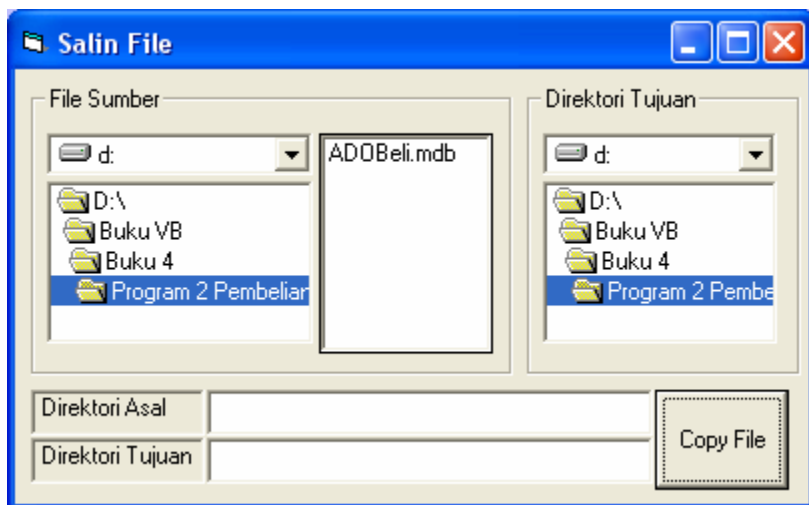
```
End If

End Sub

Private Sub Text3_KeyPress(Keyascii As Integer)
If Keyascii = 13 Then
    If Text3 = "" Then
        MsgBox "password baru belum dibuat"
        Text3.SetFocus
    Else
        Text4.SetFocus
    End If
End If
End Sub

Private Sub Text4_KeyPress(Keyascii As Integer)
If Keyascii = 13 Then
    If Text4 <> Text3 Then
        MsgBox "password konfirmasi tidak sama"
        Text4.SetFocus
        Text4 = ""
    Else
        Pesan = MsgBox("yakin password akan diganti", vbYesNo)
        If Pesan = vbYes Then
            Dim editpwd As String
            editpwd = "update kasir set passwordksr='" & Text4 & "' where namaksr='" & Text1 & "' and passwordksr='" & Text2 & "'"
            Conn.Execute editpwd
            Unload Me
        Else
            Unload Me
        End If
    End If
End If
End Sub
```

## Backup Database



```
Private Declare Function SHFileOperation Lib "Shell32.dll" Alias "SHFileOperationA" (lpFileOP As shfileopstruct) As Long
Private Const FO_copy = &H2
Private Const fof_allowundo = &H40

Private Type shfileopstruct
    hwnd As Long
    wfunc As Long
    pfrom As String
    pto As String
    Fflags As Integer
    Faborted As Boolean
```

**Harga program Rp.50.000.** Peminat silakan transfer ke 066-0525-947 (BCA) atau 156-000-250-214 (Mandiri) atau 0139-0106-3038-504 (BRI) an. Uus Rusmawan  
Email : [uusrusmawan@yahoo.com](mailto:uusrusmawan@yahoo.com)

```
hnamemaps As Long
sprogress As String
End Type

Public Sub copy(ByVal asal As String, ByVal tujuan As String)
Dim x As shfileopstruct
  With x
    .hwnd = 0
    .wfunc = FO_copy
    .pfrom = asal & vbNullChar & vbNullChar
    .pto = tujuan & vbNullChar & vbNullChar
    .Fflags = fof_allowundo
  End With
  SHFileOperation x
End Sub

'Private Sub Form_Load()
'Dir1.Path = "C:\Program Pelengkap"
'Dir2.Path = "C:\"
'End Sub

Private Sub Command1_Click()
On Error Resume Next
If Text1 = "" Then
  MsgBox "Anda belum memilih file yang akan dicopy"
  Exit Sub
ElseIf Text2 = "" Then
  MsgBox "Anda tidak memilih direktori tujuan peng-Copy-an"
  Exit Sub
End If
copy Text1.Text, Text2.Text
MsgBox "File sudah di copy"
End Sub

Private Sub Command1_KeyPress(Keyascii As Integer)
If Keyascii = 27 Then Unload Me
End Sub

Private Sub Drive1_Change()
Dir1.Path = Drive1.Drive
End Sub

Private Sub Drive2_Change()
Dir2.Path = Drive2.Drive
End Sub

Private Sub Dir1_Change()
File1.Path = Dir1.Path
End Sub

Private Sub Dir2_Change()
Text2.Text = Dir2.Path
End Sub

Private Sub File1_Click()
Text1.Text = File1.Path & "\" & File1.FileName
End Sub
```

[www.konsultasivb.com](http://www.konsultasivb.com)

*Harga program Rp.50.000.* Peminat silakan transfer ke 066-0525-947 (BCA) atau 156-000-250-214 (Mandiri) atau 0139-0106-3038-504 (BRI) an. Uus Rusmawan  
Email : [uusrusmawan@yahoo.com](mailto:uusrusmawan@yahoo.com)

