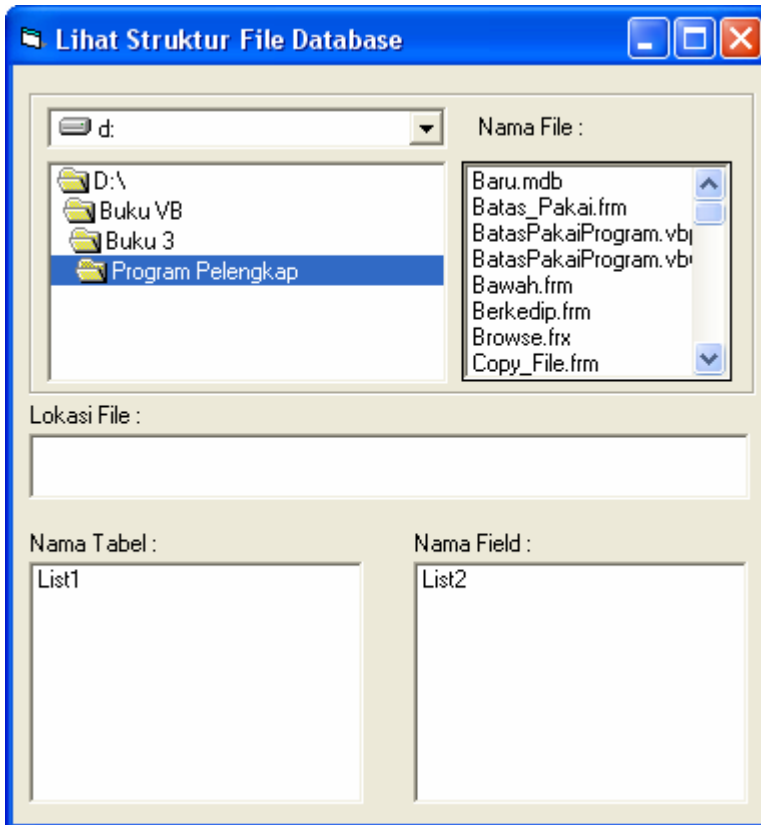


Oleh : Uus Rusmawan
Hal - 1 -

Melihat Struktur Tabel Dalam Database

Buatlah form dengan bentuk seperti gambar di bawah ini



Coding

```
Dim BukaFile As New ADODB.Connection
Dim BukaTabel As ADODB.Recordset
Dim FLD As ADODB.Field

Private Sub Form_Load()
File1.Pattern = "*.mdb"
Text1.Enabled = False
End Sub

Private Sub File1_Click()
On Error GoTo salah
List1.Clear
List2.Clear
Text1 = File1.Path & "\" & File1.FileName
Dim STR As String
```

Oleh : Uus Rusmawan

Hal - 2 -

```
STR = "provider=microsoft.jet.oledb.4.0;data source= " & Text1.Text &
";persist security info =false"
BukaFile.Open STR
Set BukaTabel = BukaFile.OpenSchema(adSchemaTables)
Do Until BukaTabel.EOF
    If Left(BukaTabel.Fields("Table_Name").Value, 4) <> "MSys" And
Left(BukaTabel.Fields("Table_Name").Value, 3) <> "sys" Then
        List1.AddItem BukaTabel.Fields("table_name")
    End If
    BukaTabel.MoveNext
Loop
BukaFile.Close
On Error GoTo 0
Exit Sub
salah:
MsgBox "Ada kesalahan proses"
End Sub

Private Sub list1_click()
Dim BukaFile As New ADODB.Connection
Dim BukaTabel1 As New ADODB.Recordset
Dim FLD As ADODB.Field
Dim STR As String
STR = "provider=microsoft.jet.oledb.4.0;data source= " & Text1.Text &
";persist security info =false"
BukaFile.Open STR
List2.Clear
BukaTabel1.Open "select * from " & List1 & "", BukaFile,
adOpenDynamic, adLockBatchOptimistic, adCmdText
For Each FLD In BukaTabel1.Fields
    List2.AddItem FLD.Name & " " & FLD.DefinedSize & " Digit"
Next FLD
BukaFile.Close
End Sub

Private Sub Drive1_Change()
On Error GoTo SalahDrive
Dir1.Path = Drive1.Drive
Exit Sub
SalahDrive:
MsgBox "Drive Anda Tidak Dapat Digunakan"
Drive1.Drive = "C"
End Sub

Private Sub Dir1_Change()
Text1 = "": Text2 = ""
File1.Path = Dir1.Path
End Sub
```