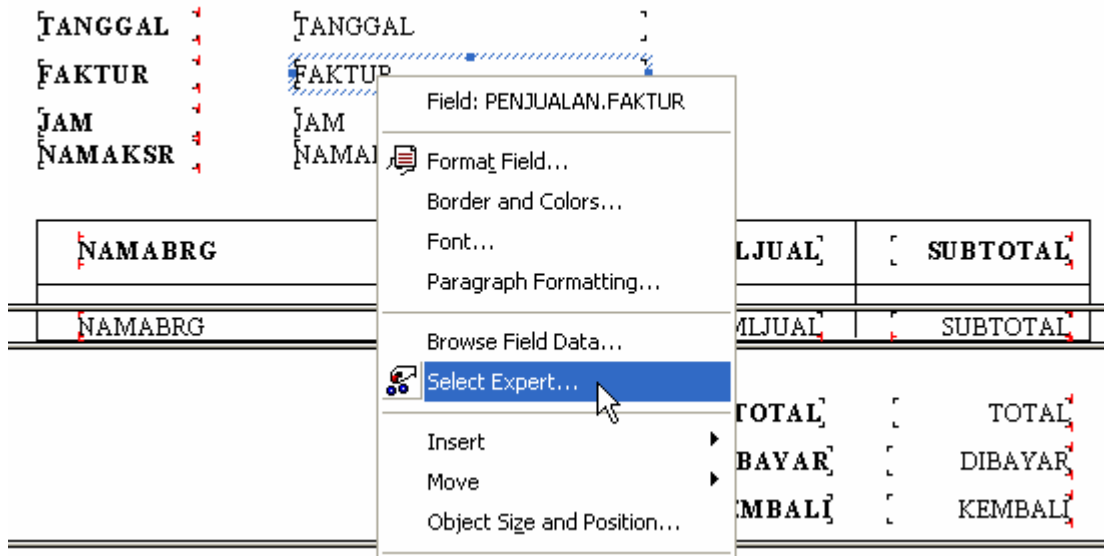


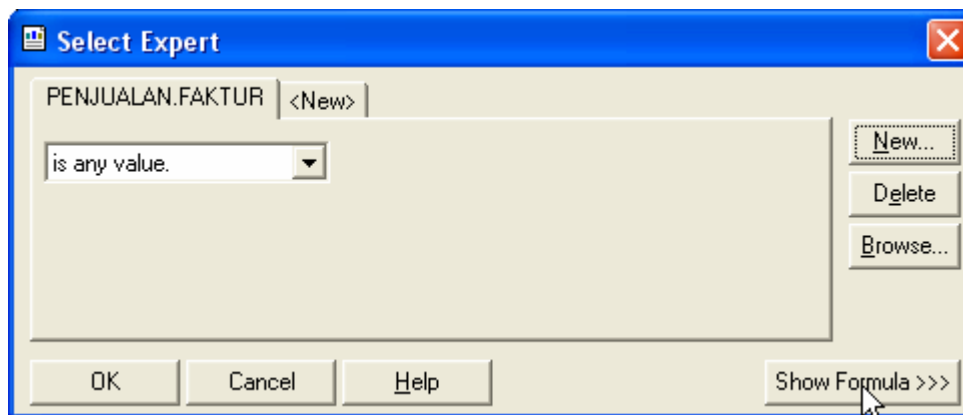
Oleh : Uus Rusmawan
Hal - 1 -

Memanggil Faktur Terakhir Sesaat Setelah Data Disimpan

- ✓ Buka file laporan
- ✓ Klik kanan field Faktur
- ✓ Pilih select expert

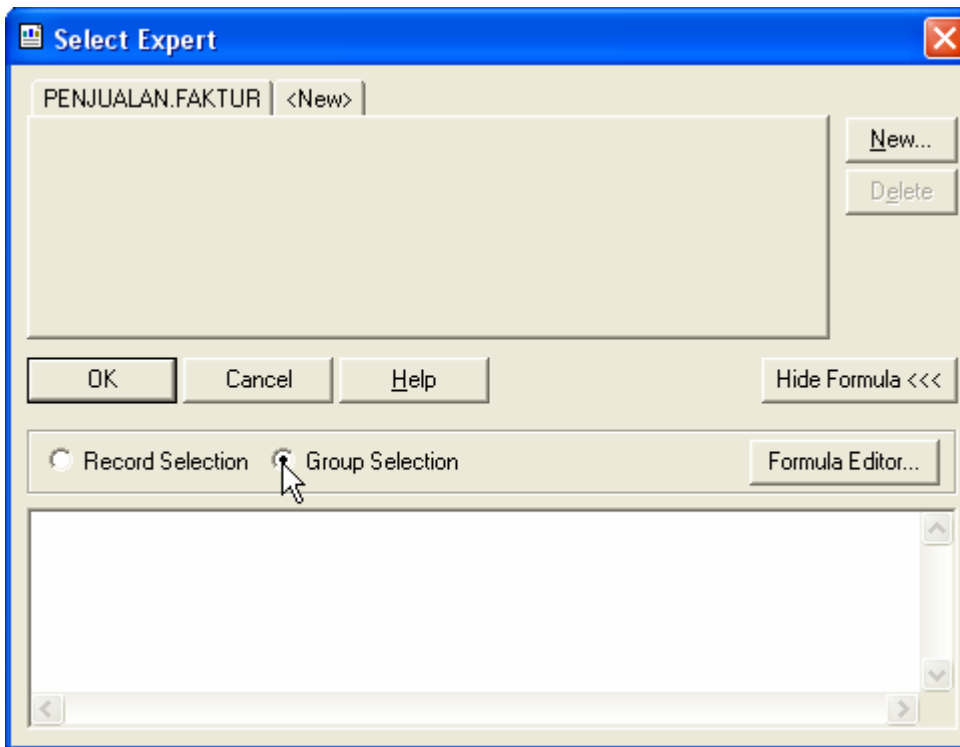


- ✓ Klik show formula



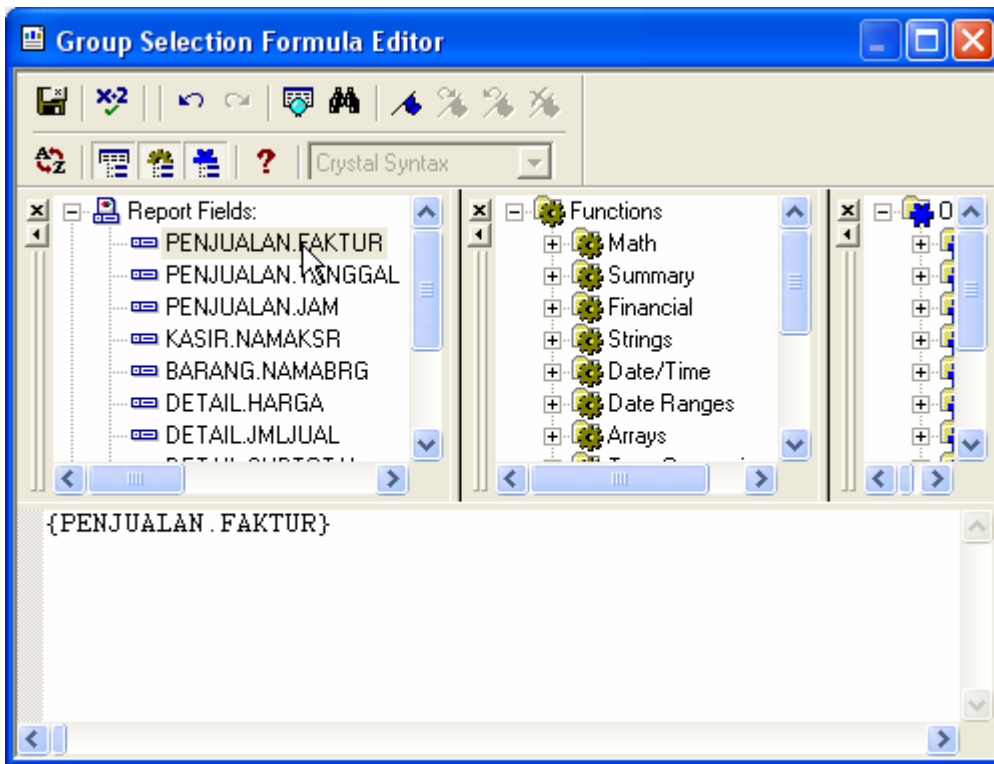
- ✓ Klik group selection

Oleh : Uus Rusmawan
Hal - 2 -



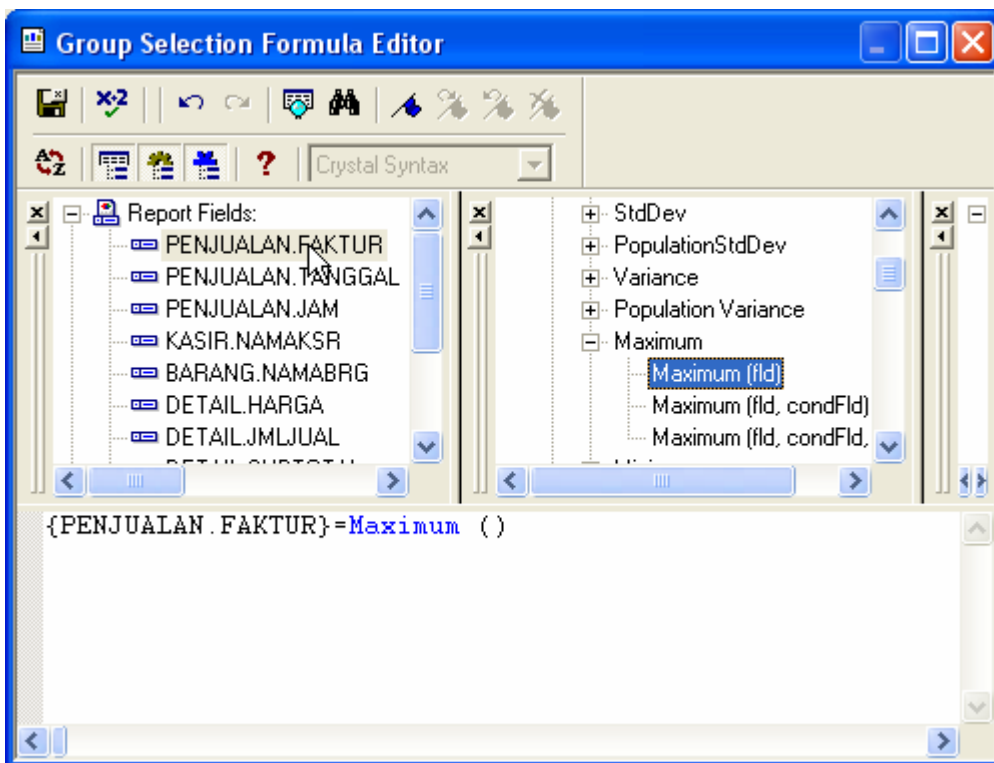
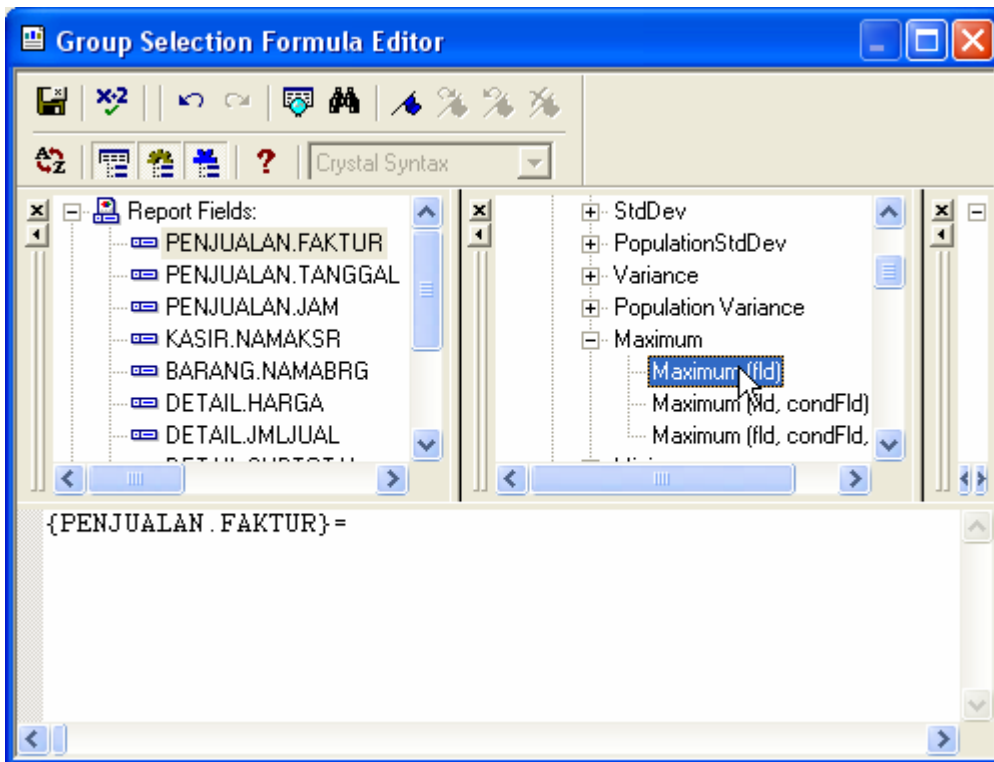
- ✓ Klik formula editor
- ✓ Double klik penjualan.faktur

Oleh : Uus Rusmawan
Hal - 3 -



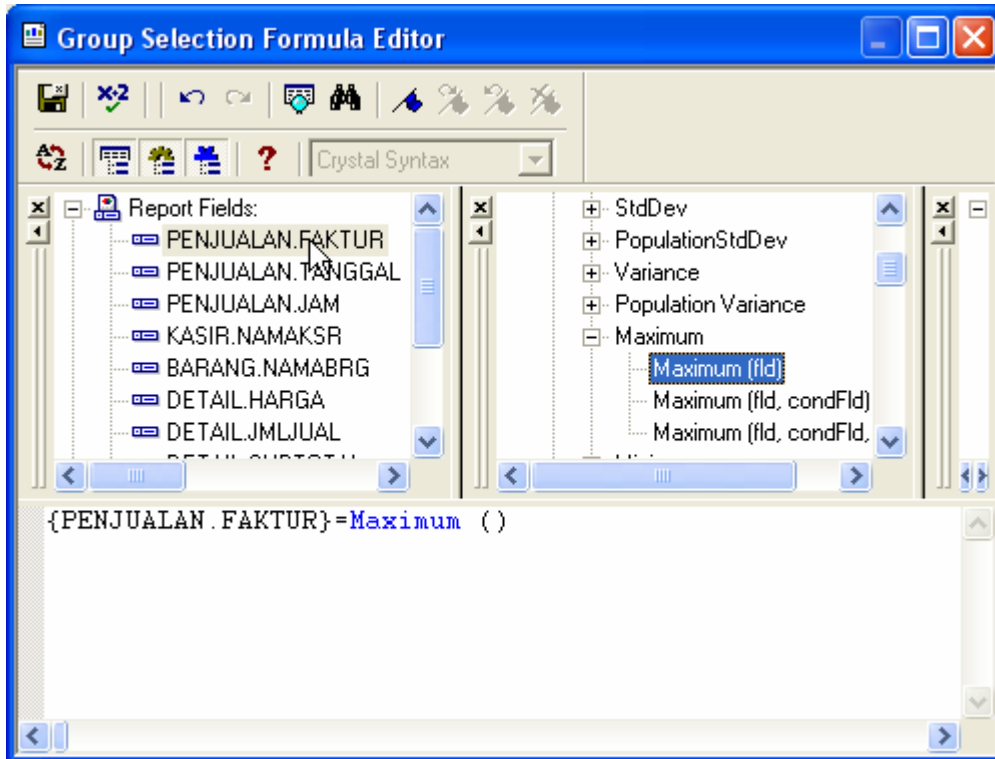
- ✓ Ketik tanda = (sama dengan)
- ✓ Double klik maximum(fld)

Oleh : Uus Rusmawan
Hal - 4 -



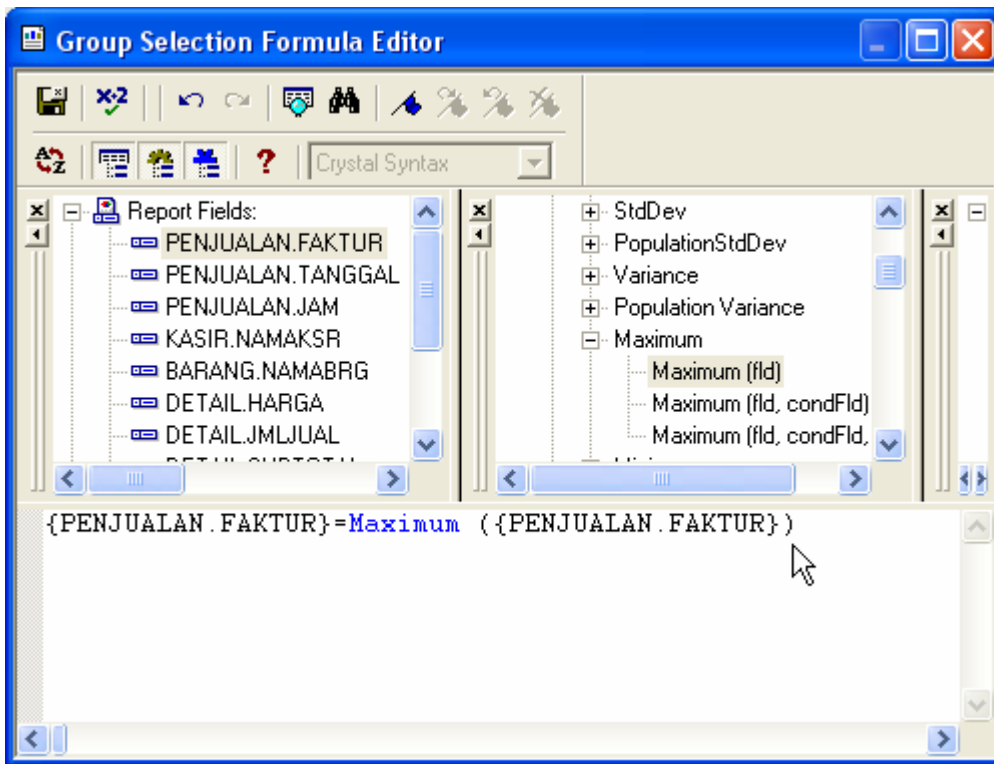
Oleh : Uus Rusmawan
Hal - 5 -

- ✓ Double klik lagi penjualan.faktur



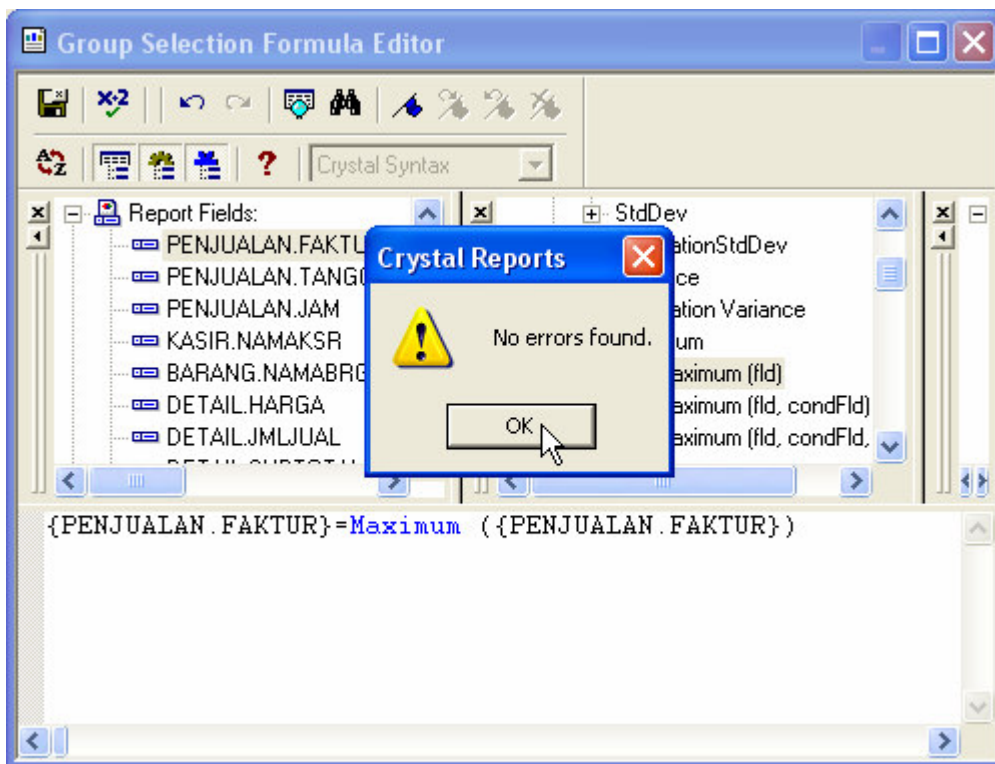
Hasil :

Oleh : Uus Rusmawan
Hal - 6 -



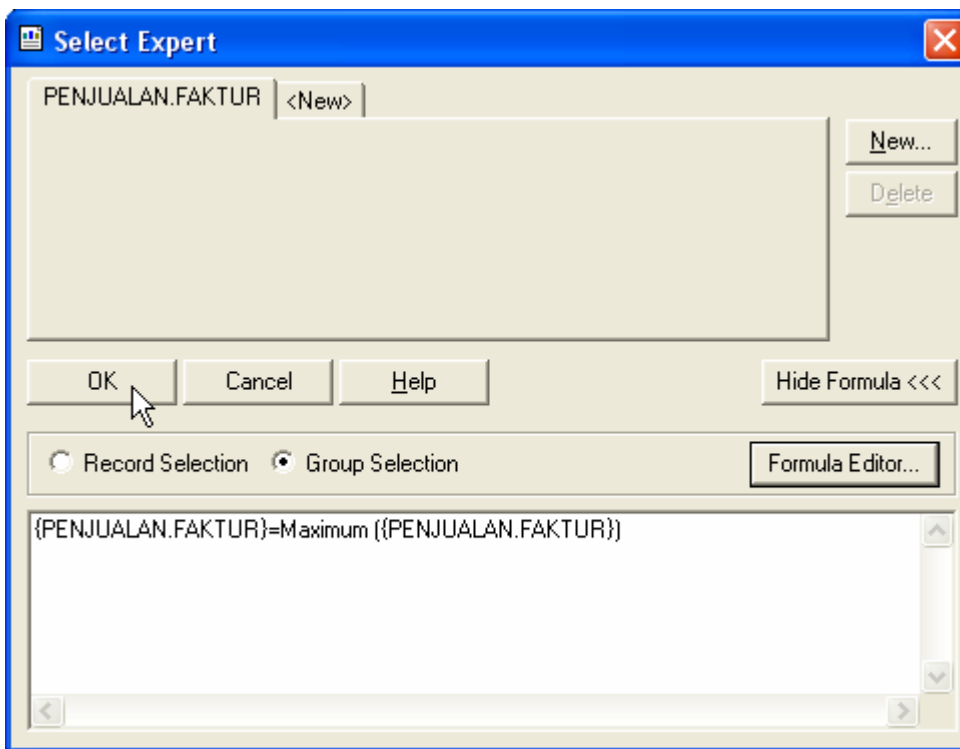
- ✓ Klik ikon check

Oleh : Uus Rusmawan
Hal - 7 -



- ✓ Klik save and close
- ✓ Klik OK

Oleh : Uus Rusmawan
Hal - 8 -



- ✓ Simpan file laporan
- ✓ Jalankan program
- ✓ Crystal report akan memanggil data paling akhir

Cara lain : boleh juga rumus ini diketik secara manual