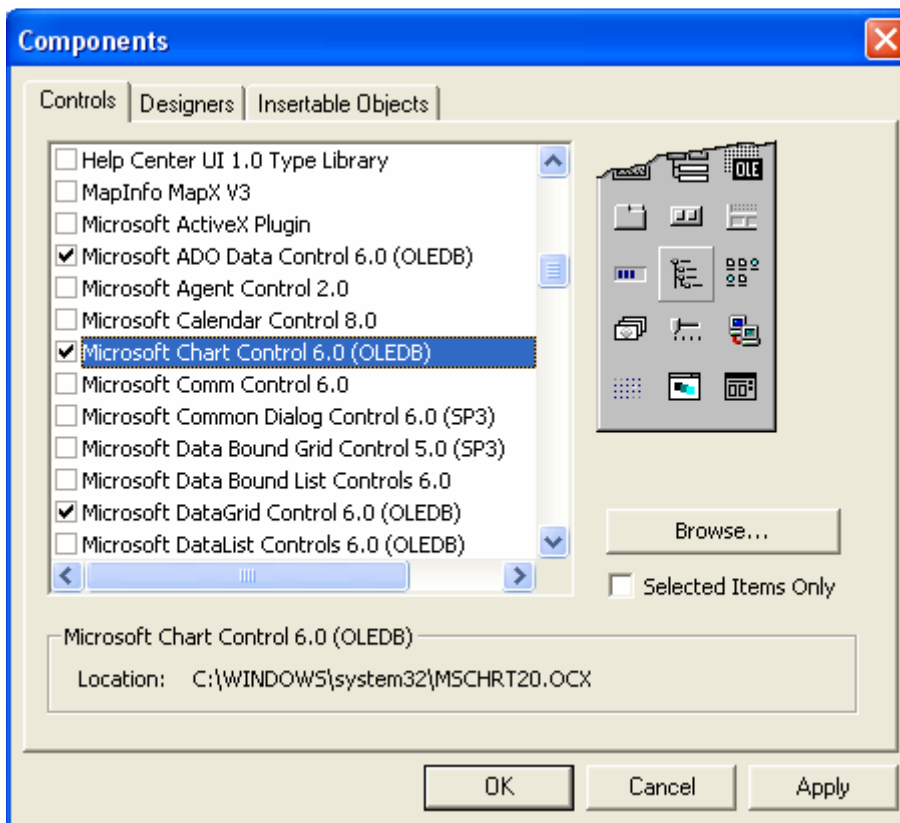


Oleh : Uus Rusmawan
Hal - 1 -

Membuat Grafik Dengan VB

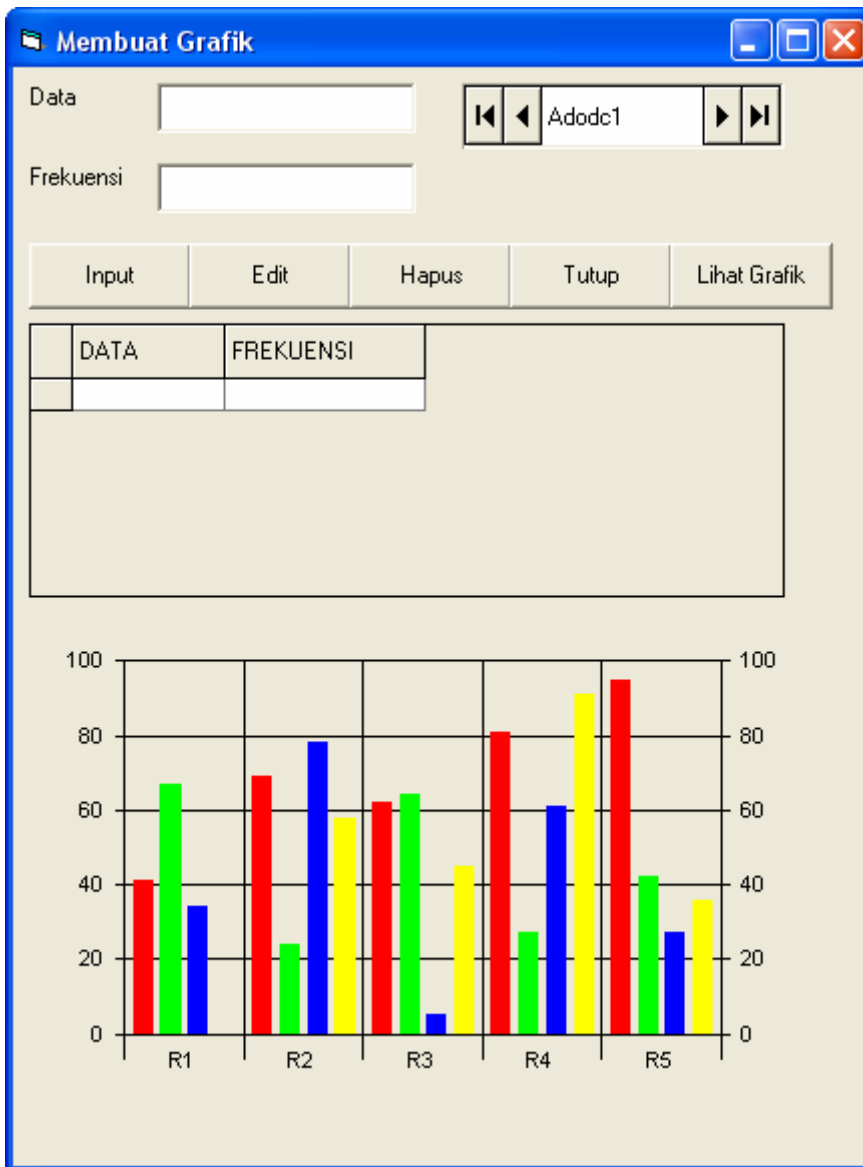
Buka VB

Tambahkan komponen mschart, adodc dan datagrid



Buatlah form seperti gambar berikut :

Oleh : Uus Rusmawan
Hal - 2 -



Coding :

```
Dim CONN As New ADODB.Connection
Dim RSDATA As New ADODB.Recordset

Sub KONEKSI()
Set CONN = New ADODB.Connection
Set RSDATA = New ADODB.Recordset
CONN.Open "Provider=Microsoft.Jet.OLEDB.4.0;Data Source= " & App.Path &
"\db1.mdb;Persist Security Info=False"
End Sub
```

Oleh : Uus Rusmawan
Hal - 3 -

```
Private Sub Form_Load()  
Adodc1.ConnectionString = "Provider=Microsoft.Jet.OLEDB.4.0;Data  
Source= " & App.Path & "\db1.mdb;Persist Security Info=False"  
Adodc1.RecordSource = "DATAKU"  
Adodc1.Refresh  
Set DataGrid1.DataSource = Adodc1  
DataGrid1.Refresh  
End Sub  
  
Private Sub Command5_Click()  
Dim Nilai(1 To 6, 1 To 6) '===>>> inilah yang masih harus dicari  
solusinya, karena tidak bisa berupa variabel  
Call KONEKSI  
RSDATA.Open "select * from dataku", CONN  
RSDATA.Requery  
a = 0  
RSDATA.MoveFirst  
Do While Not RSDATA.EOF  
    a = a + 1  
    Nilai(a, 1) = RSDATA!Data  
    Nilai(a, 2) = RSDATA!frekuensi  
    RSDATA.MoveNext  
Loop  
  
MSChart1.ChartData = Nilai  
End Sub
```