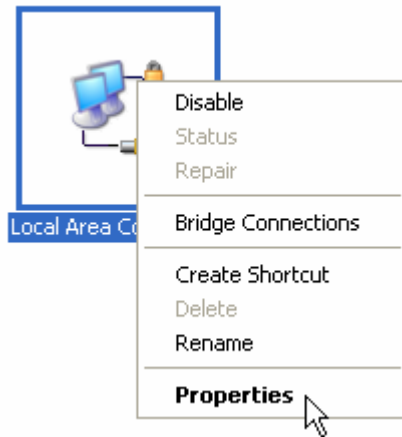


Oleh : Uus Rusmawan  
Hal - 1 -

## Database Access untuk Multi User

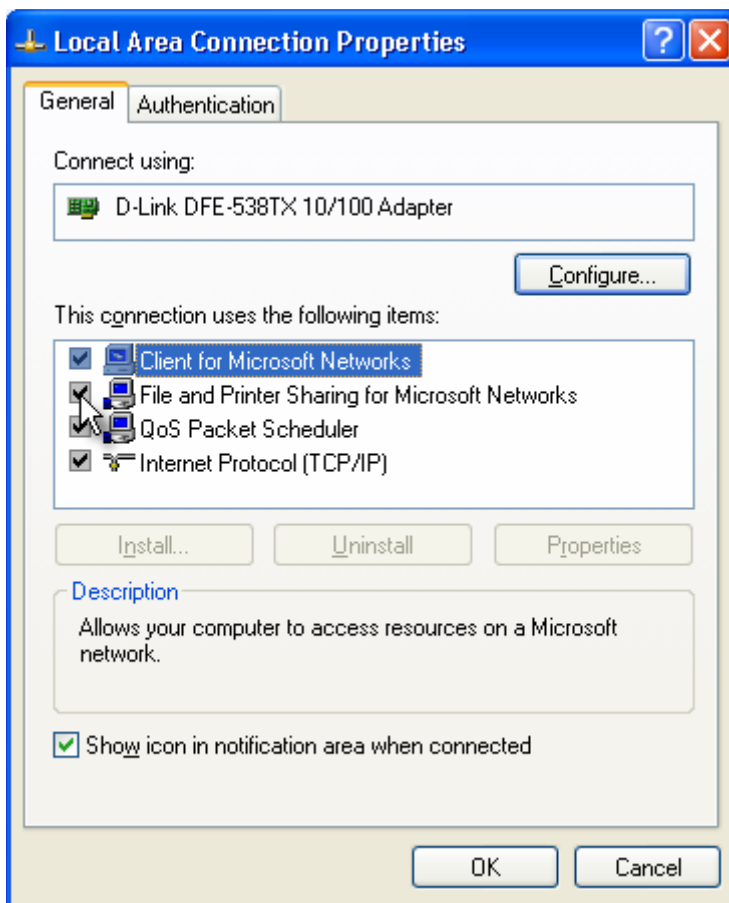
### Mengaktifkan file dan printer sharing

1. Aktifkan **CONTROL PANEL** di server
2. Double klik **NETWORK CONNECTION**
3. Klik kanan **LOCAL AREA CONNECTION**



4. Pilih **PROPERTIES**
5. Aktifkan **FILE AND PRINTER SHARING FORM MICROSOFT NETWORK**
6. Klik **OK**

Oleh : Uus Rusmawan  
Hal - 2 -



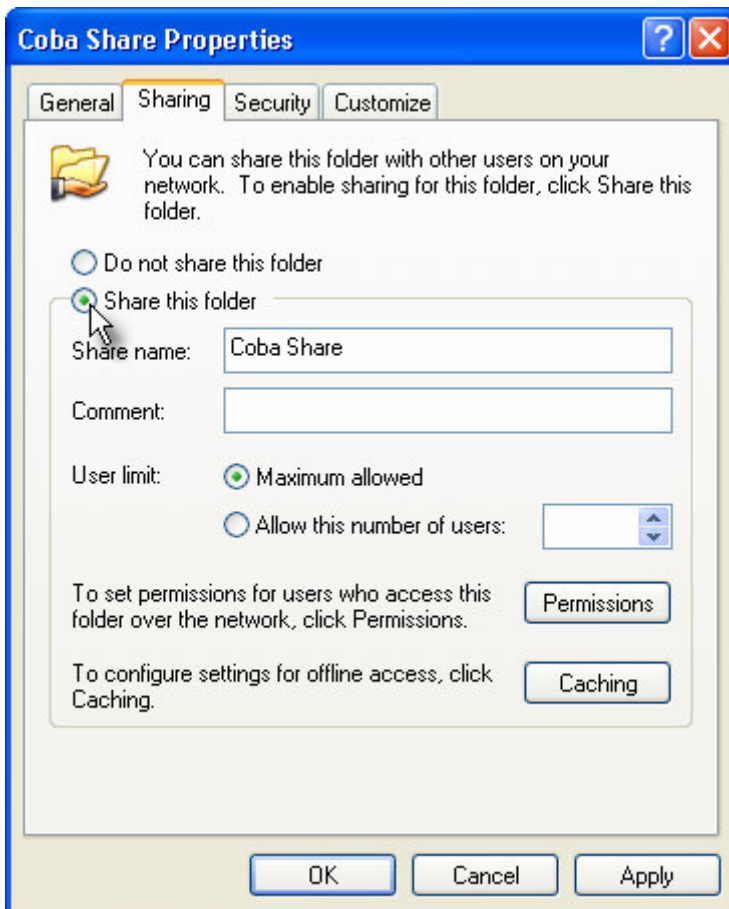
### **Membuat Sharing Direktori Di Server**

1. Buka **WINDOWS EXPLORER**
2. Klik kanan folder tempat menyimpan database (**COBA SHARE**)
3. Pilih **SHARING AND SECURITY**

Oleh : Uus Rusmawan  
Hal - 3 -

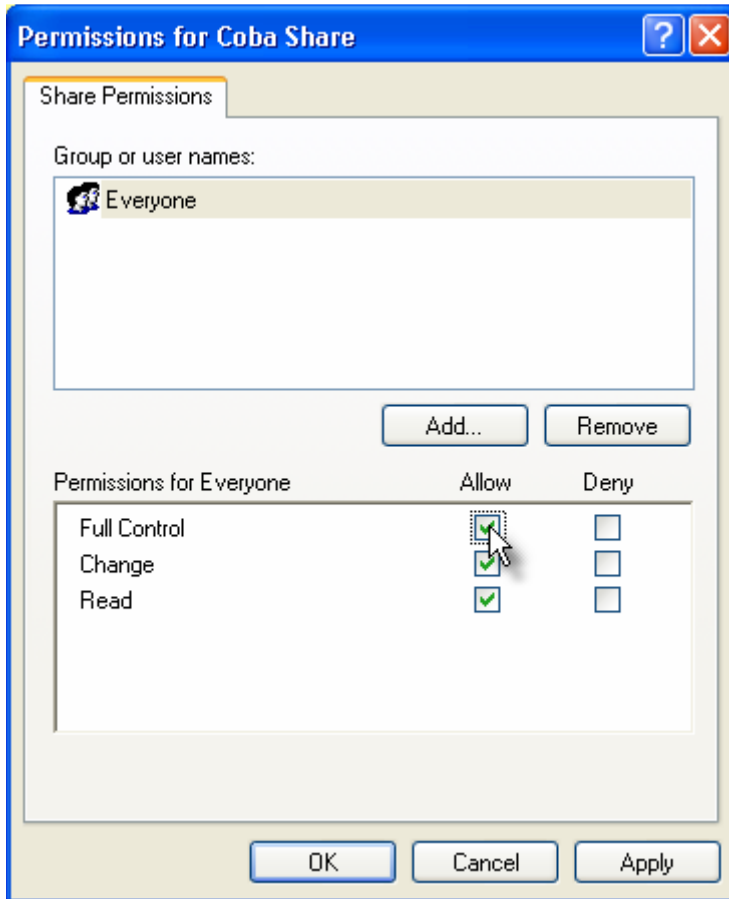


#### 4. Pilih **SHARE THIS FOLDER**



Oleh : Uus Rusmawan  
Hal - 4 -

5. Klik **PERMISSIONS**
6. Aktifkan opsi **ALLOW** pada opsi full control

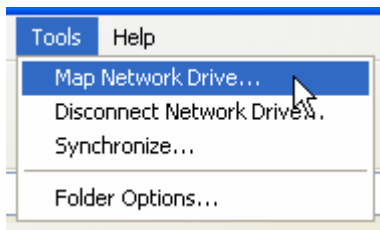


7. Klik **APPLY > OK**
8. Klik **APPLY > OK**

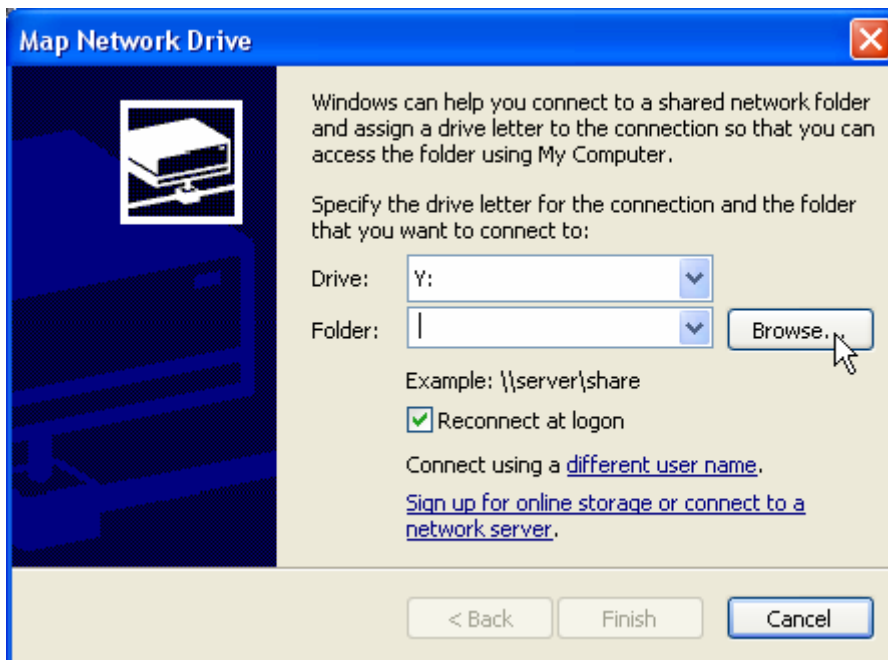
### Membuat Mapping Database Server Di Client

1. Aktifkan **WINDOWS EXPLORER**
2. Klik **MENU TOOLS**
3. Klik **MAP NETWORK DRIVE**

Oleh : Uus Rusmawan  
Hal - 5 -



4. Klik **BROWSE**

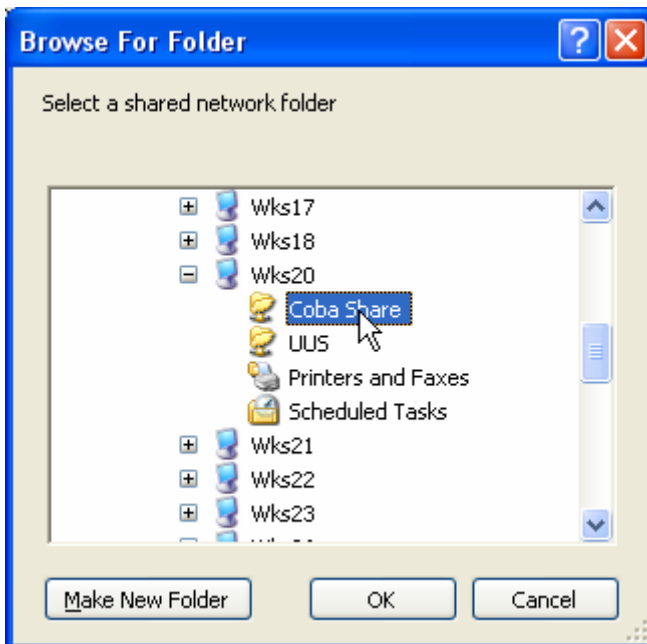


5. Klik **TANDA +** di sebelah kiri Bina Insani

Oleh : Uus Rusmawan  
Hal - 6 -



6. Cari folder di server tempat menyimpan database (**COBA SHARE**)



7. Klik **OK**
8. Klik **FINISH**

Oleh : Uus Rusmawan  
Hal - 7 -

